

Radix Device Management Streams User Guide

Radix Device Management Platform

Table of Contents

Chapter 1. Streams Console	3
1.1 Introduction	3
1.2 Overview	3
1.3 Displaying the Streams Console	3
1.4 Display of a Stream Item.....	4
1.5 Adding Content to the Streams Repository.....	6
1.5.1 Image.....	7
1.5.2 Video	8
1.5.3 URL.....	9
1.5.4 Content Creator—Content Editor Screen.....	9
1.6 Editing and Deleting Content Items.....	12
1.7 Cloning a Content Item	14
1.8 Creating a New Stream	14
1.9 Populating the Stream	17
1.9.1 Associating a Group with the Stream	17
1.9.2 Applying a Filter.....	19
1.10 Scheduling the Display of the Stream.....	21
1.11 Applying Settings to the Display of the Stream	23
1.11.1 Device Orientation.....	24
1.11.2 Floating navigation buttons.....	27
1.11.3 Accessing the Service menu.....	29
1.11.4 Power & Input Settings	32
1.11.5 Offline configuration.....	33
1.11.6 Power & Input Settings	Error! Bookmark not defined.
1.11.7 Offline configuration.....	Error! Bookmark not defined.
1.12 Saving and Executing the Stream	33
1.13 Stopping a Stream.....	33
1.13.1 Method One: Removing the Group.....	34
1.13.2 Method Two: Removing the Tag.....	35
1.13.3 Restoring a Tag to Resume Playing a Stream.....	36
1.14 Deleting a Stream.....	37

Chapter 1. Streams Console

1.1 Introduction

Radix Streams is a new addition to the Radix Device Management platform. It is a content management system (CMS), that allows you to create a content carousel or slideshow with display rules. In addition, it allows you to create your own content using a drag-and-drop HTML builder and add it to your slideshow, and display on the remote devices in your fleet.

The Streams modules are a versatile new addition to the Radix management platform. It is a great and affordable solution catering to all your business needs, such as digital signage, in a single package.

1.2 Overview

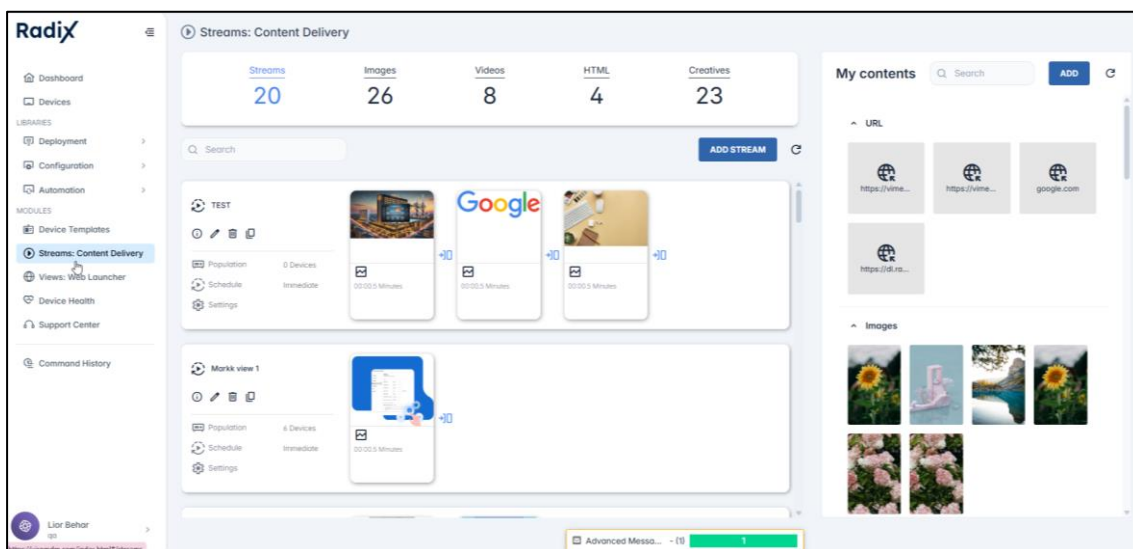
The Streams Console allows you to create a repository of content that you can splice together into a slideshow. The content can consist of:

- Images,
- Videos,
- URLs, or
- Creatives--A custom-made style sheet including text, images, clickable buttons, and more.

Once you have created a repository of content elements, you can then place the elements in a particular order in a Stream. You can arrange the elements according to how you want them to appear on remote devices that display the streaming content. Besides controlling the order of the images, you can also control how long each element will be displayed.

1.3 Displaying the Streams Console

When you click on the **Streams** icon in the sidebar menu, the following Streams console opens:

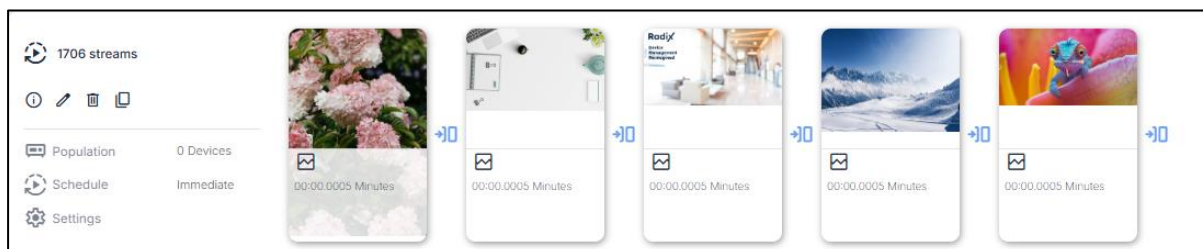


Streams Console

The top banner displays the total number of Streams that you have at your disposal in the Streams repository. There is also running score of the number of items saved in the Streams console: the number of images, videos, URLs, and Creative Content items.

1.4 Display of a Stream Item

Let us take a closer look at an individual stream:



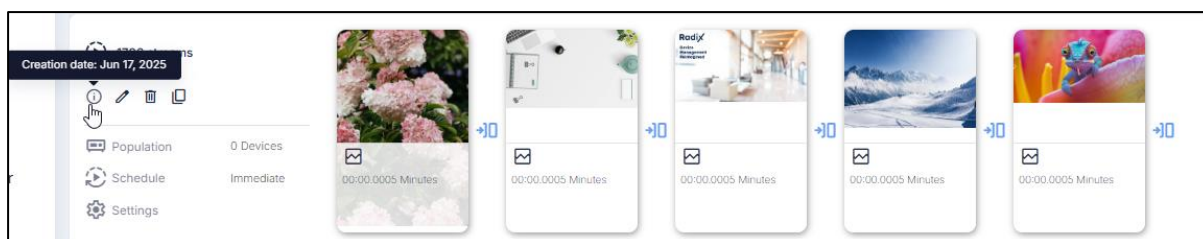
Each stream item displays:

- The name of the stream,
- Icons to perform more actions on the playlist,
- The Population of the Stream, which is the number of devices displaying the Stream,
- The Schedule of the Stream, when the Stream will be displayed,
- Settings, which allows you to modify the how the Stream is displayed.

Here is a summary of the icons in the Stream:

Icon	Description
	Information: Displays the creation date of the playlist.
	Edit: To edit the stream
	Delete: To delete the stream
	Clone: To clone the playlist




- **Information:** When you hover your mouse over the information icon, it displays the creation date of the playlist.



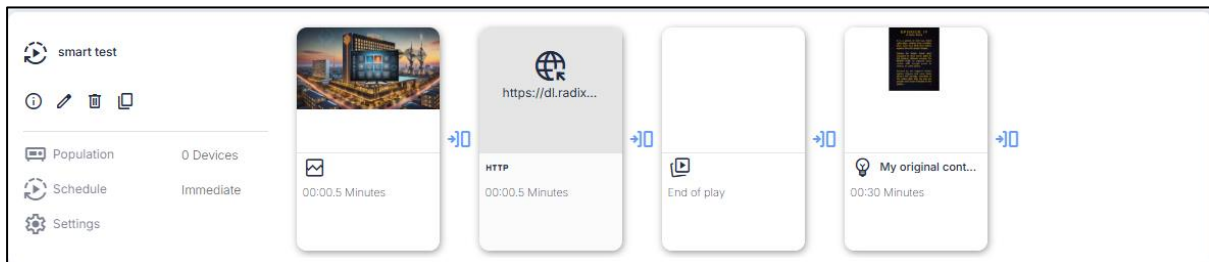
- **Edit stream:** This allows you to edit the playlist. You will be able to
 - Change the name of the playlist,
 - Arrange the order of the slides in the playlist,
 - Modify the time that the slide will be displayed in the playlist. The default display time for each element is 30 minutes, but you can choose to display a slide for as long as 99:99 hours!

- **Delete:** This will prompt you if you want to delete a playlist.
- **Clone:** This will allow you to create a copy of a playlist. You can use this feature to use a previous playlist as a template and then modify it to your preferences.

In the **My contents** pane on the right, you will notice four types of content you can arrange to form a Stream. When added to a stream, each slide is assigned a distinct icon, indicating the content type:

Icon	Description
	Images
	Videos
	Creative Content
HTTP	Content from a URL

For example, in the Stream displayed below, we see that the first slide is an image, the second is content from a URL, the third is a video clip, and the fourth is creative content.



These four types of content are stored on the right of the Streams Console, in the **My Contents** pane:

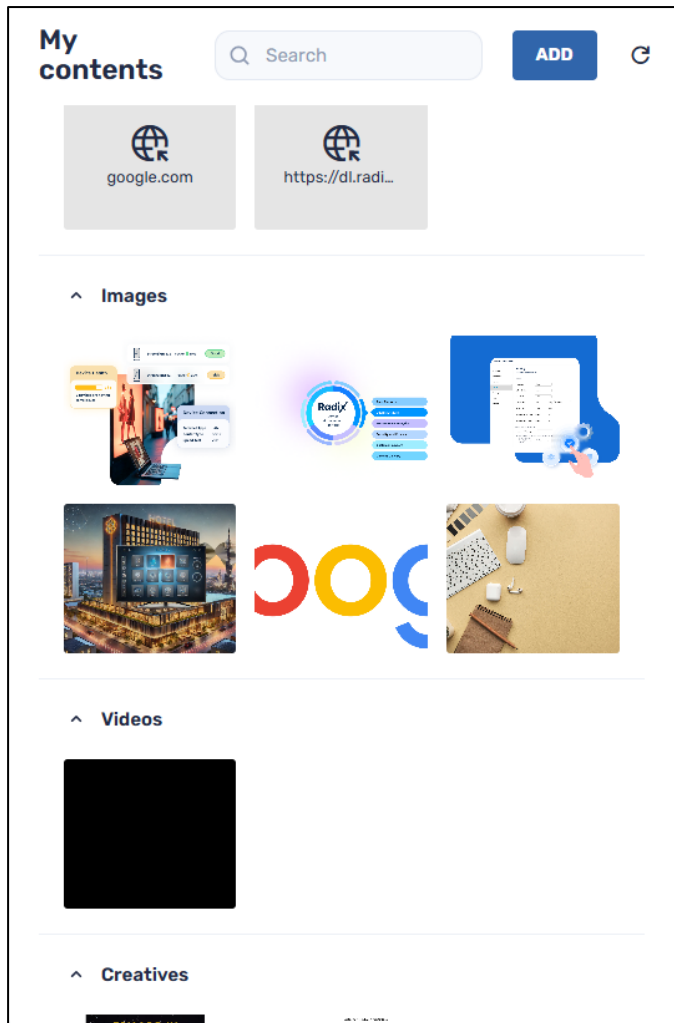


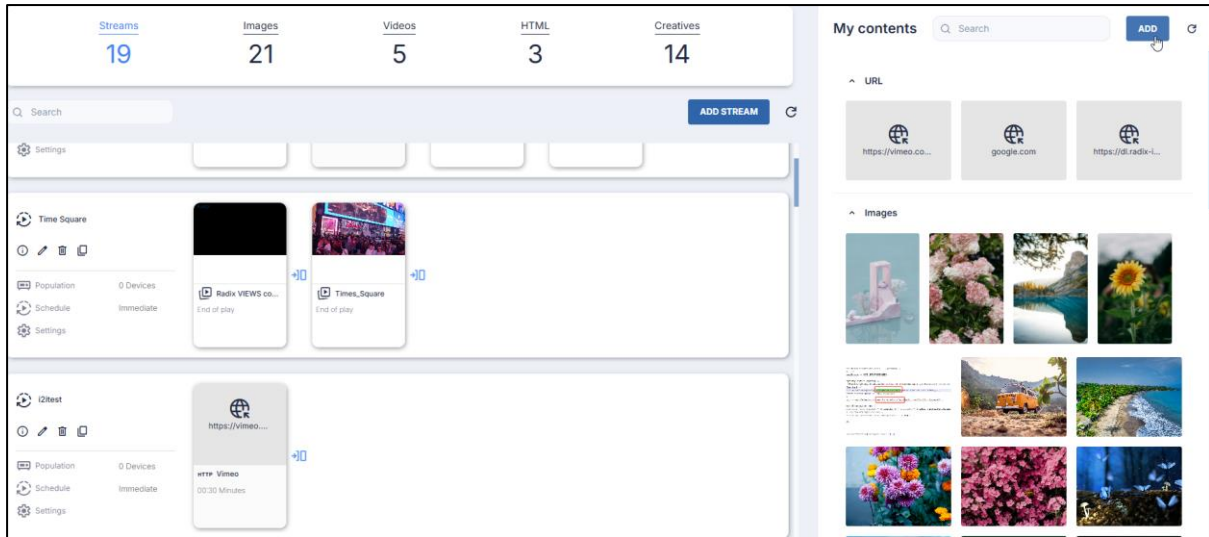
Figure 1-1: The My Content pane, displaying saved content items

1.5 Adding Content to the Streams Repository

The **Streams** interface allows you to add content from a URL, images and videos from your computer, or to create your own content from the Content Creator screen. You save these content items in the Streams repository on the right of the screen

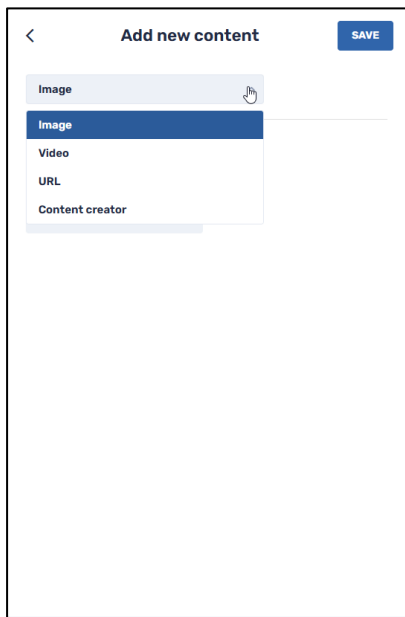
To add new content to the repository:

1. Click on **Add** in the **My Contents** window.



The **Add new content** window opens.

- In the drop-down list, select the type of content you would like to add. The options include images, videos, URLs, and custom-made content.



We will go through the content options in turn:

1.5.1 Image

You can upload an image from your computer or a mobile device.

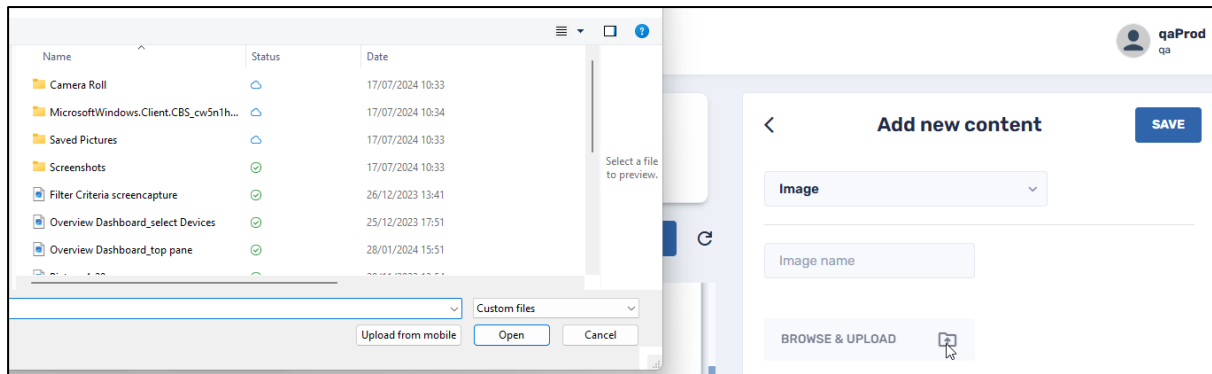
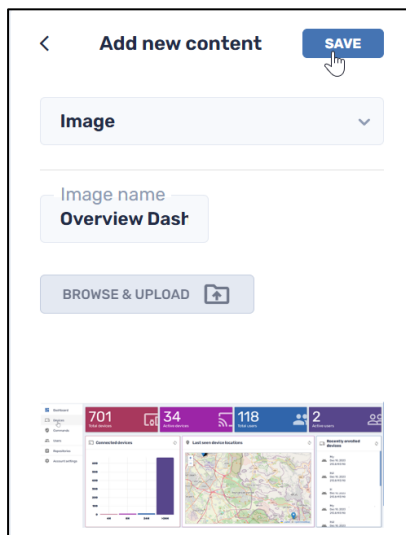


Figure 1-2: Clicking "Browse & Upload" will prompt you to upload an image file from your computer

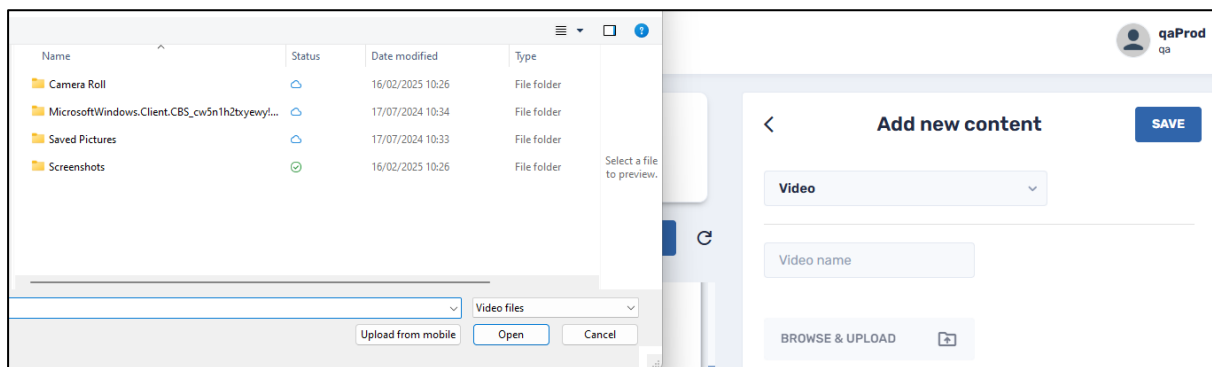
To add an image file:

1. Click on **Browse & Upload** and select an image file from your computer.
2. You will be shown a preview of the image. Click **Save** to add it to the image repository.



1.5.2 Video

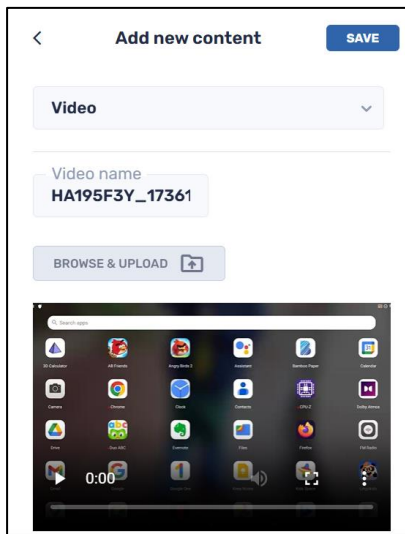
You can upload a video file from your computer or a mobile device.



To add a video file:

1. Click on **Browse & Upload** and select a video file from your computer.

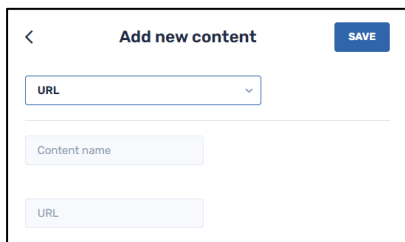
2. You will be shown a thumbnail of the video. You can preview the video before saving it to the Streams repository.



3. Click **Save** to add it to the image repository.

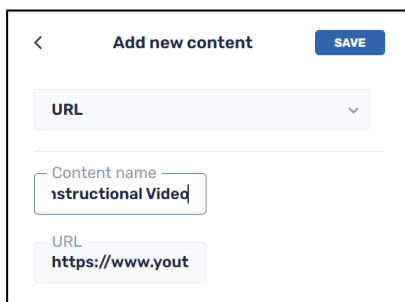
1.5.3 URL

You can upload content by supplying a URL.



To add a URL:

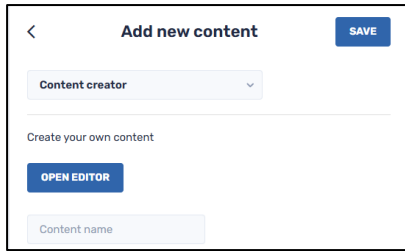
1. Assign a name to the URL content that you wish to add in the **Content name** textbox.
2. Copy and paste the URL in the URL field.
3. Click **Save**. The URL will be saved to the repository of URLs.



1.5.4 Content Creator—Content Editor Screen

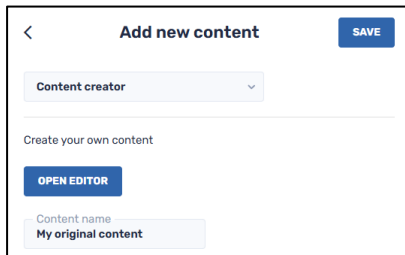
This allows you to open an interface where you can create your own content.

Streams Console

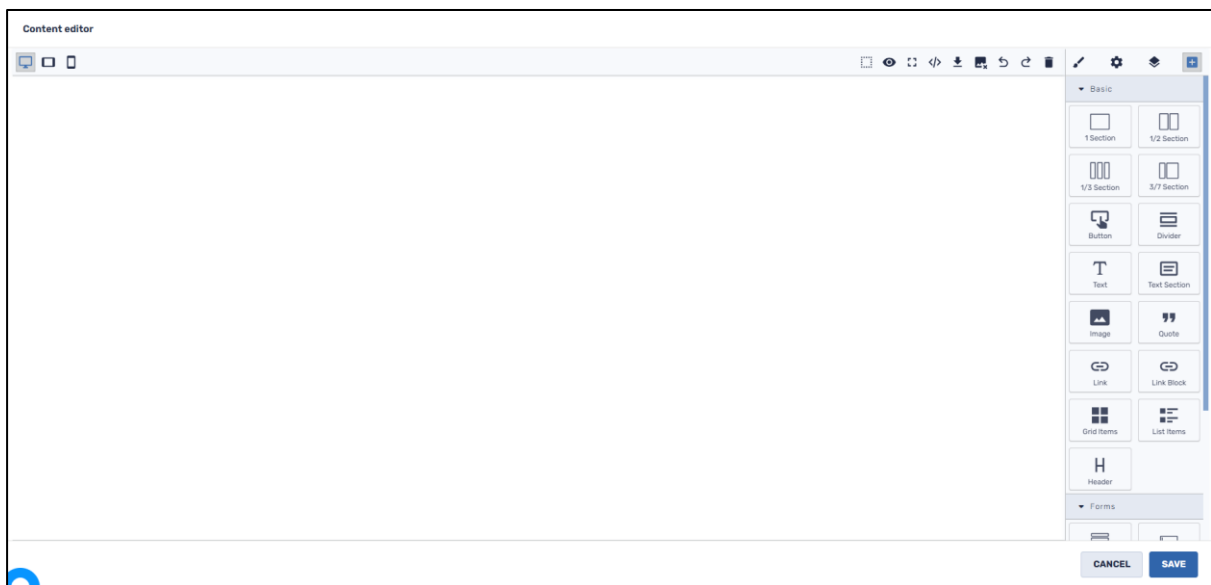


To create your own original content:

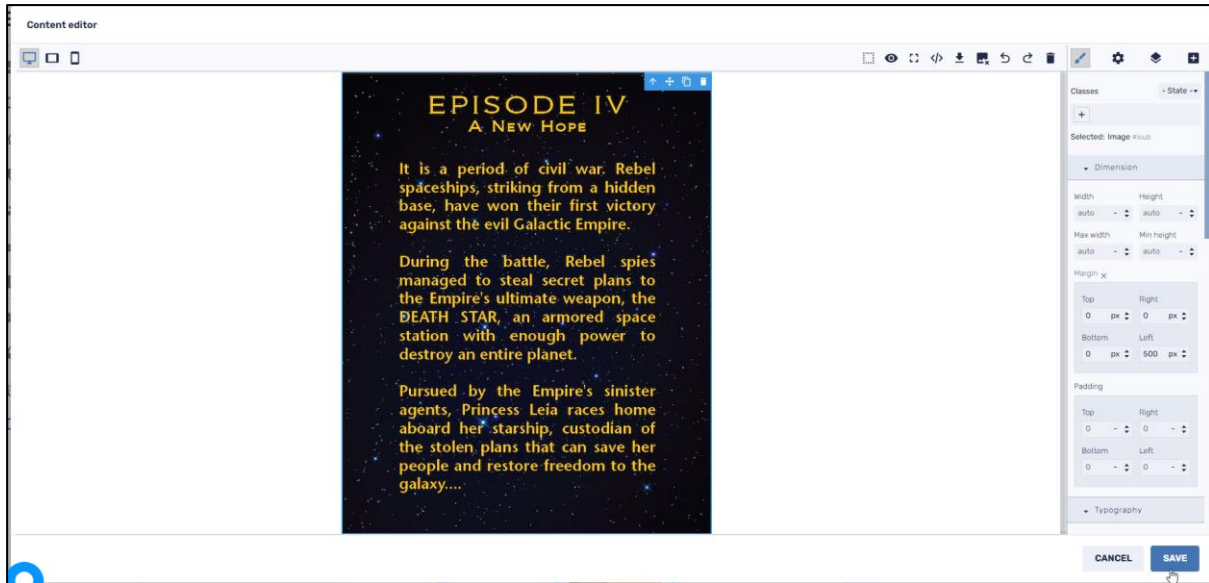
1. Assign a name to your project in the **Content name** box.



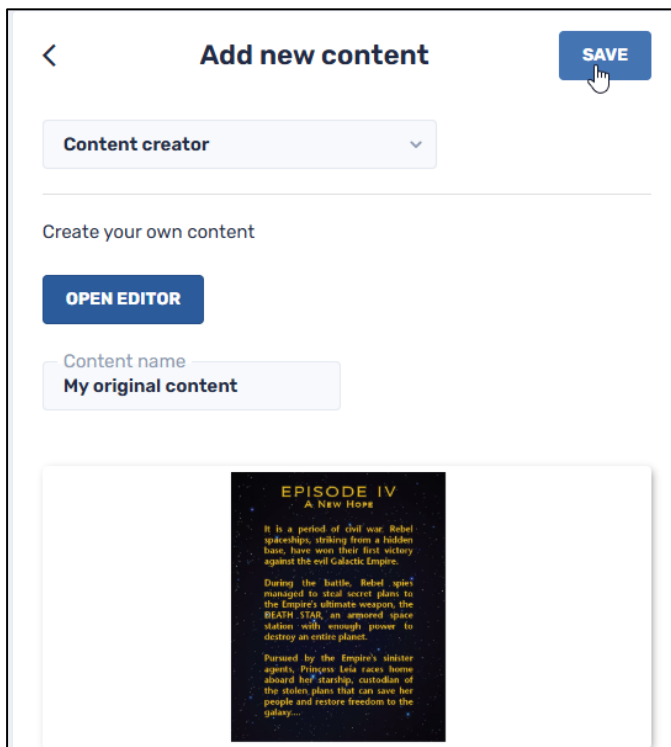
2. When you click on **Open Editor**, the **Content Editor** screen opens.



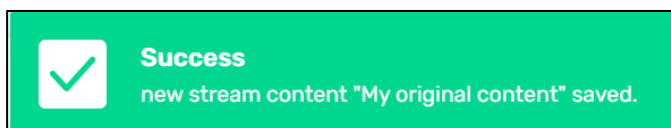
3. Drag the text elements from the menu on the right onto the canvas.
4. Upon completing creating your content, remember to click **Save** in the lower right corner, to save your project.



5. Click **Save** in the **Add new content** window, to add your creative content to the repository of creative content items.



6. You will receive a notification that the content has been saved successfully.



The content that you created now appears in the repository of Creative Content items.

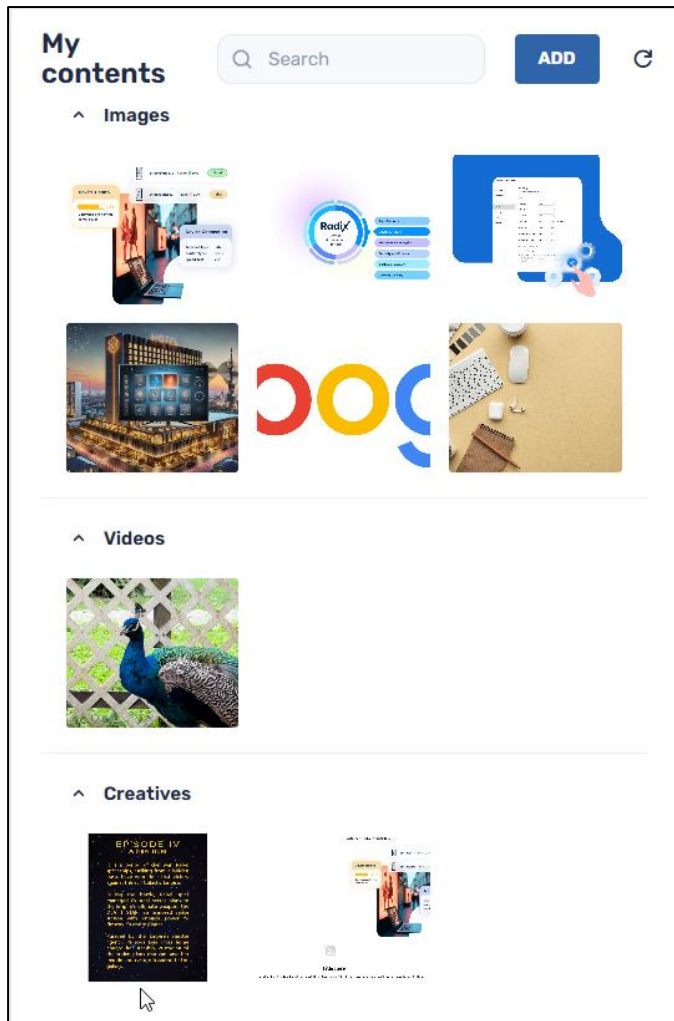


Figure 1-3: The original content in the *Creatives* section of the Streams Console

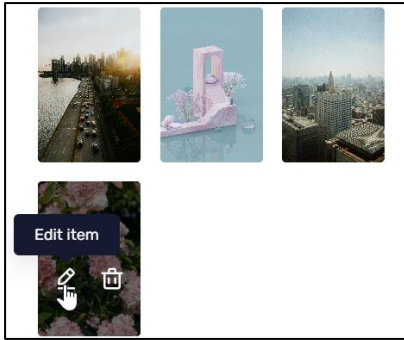
For a comprehensive overview of the Content Creator and all of the editing options, consult the **Radix Content Creator User Guide**.

1.6 Editing and Deleting Content Items

There is also an option to modify or delete a content item that you have added to the repository.

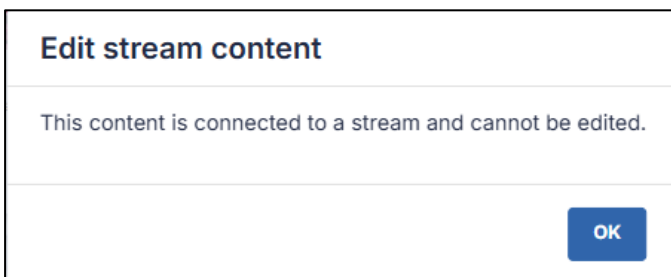
To edit a content item:

1. In the “**My contents**” pane, find the item that you would like to edit.
2. Hover your mouse over the item and click on the **Edit Item** option. You will have the options of either editing the content item or deleting it.



You will then be able to change the name of the content item, or the content itself.

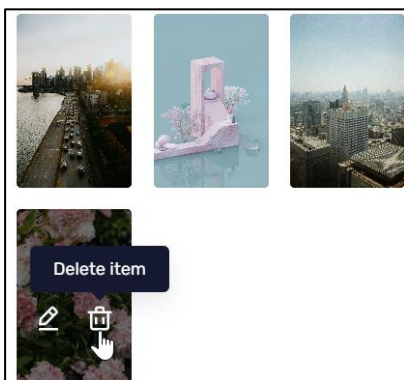
Note: If the content item is already associated with a Stream, you will get the following alert that the item cannot be edited:



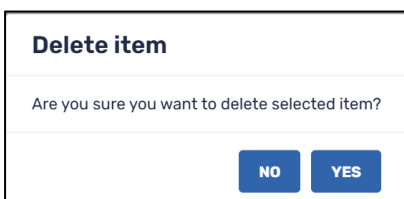
If you wish to edit a “Creative Content” item that is presently associated with a Stream, you can clone it and then edit the cloned duplicate. (See **Section 1.7, Cloning a Content Item** for instructions on cloning a Creative Content item.)

To delete a content item:

1. Hover your mouse on the content item and select the **Delete item** option.



2. You will receive a prompt asking whether you are sure that you want to delete the item. Click **Yes** to delete.

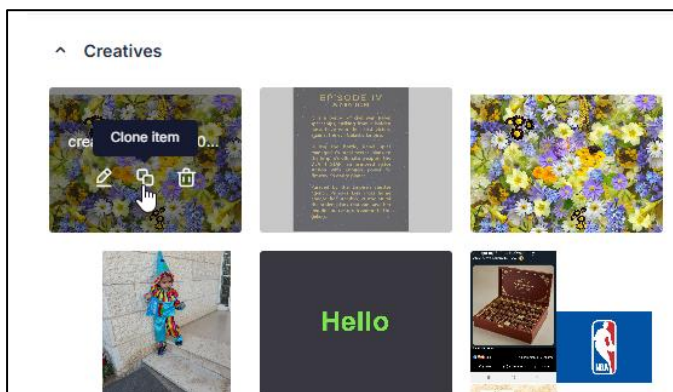


1.7 Cloning a Content Item

For creative content items, there is yet another option to clone the item:



Clicking on **Clone item** creates a copy of the creative content item. This allows you to build on a creative content item that you have made, modifying it according to your preferences.

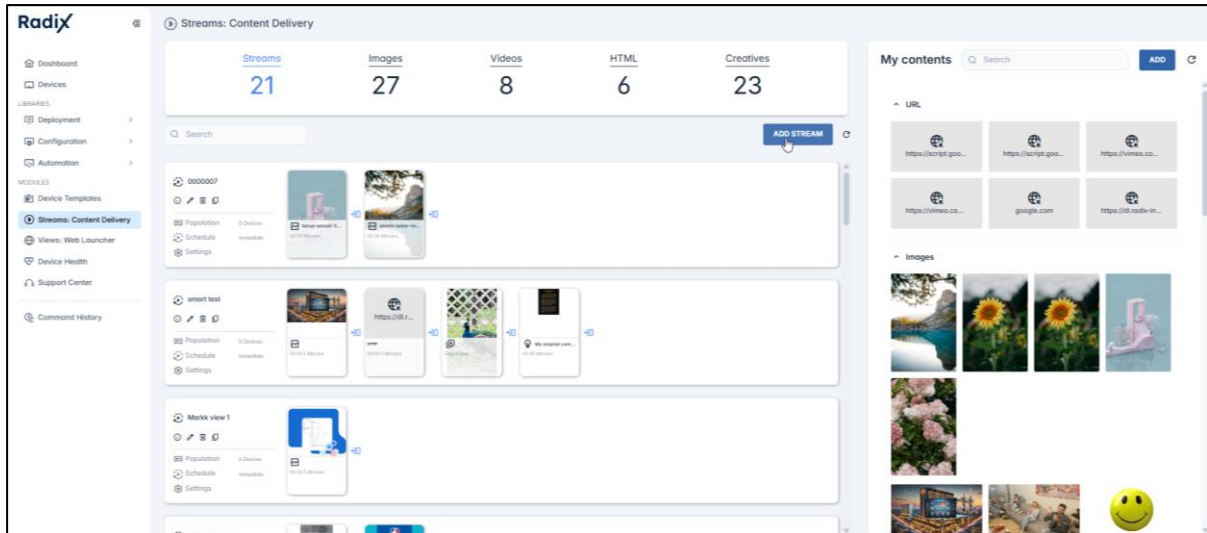


1.8 Creating a New Stream

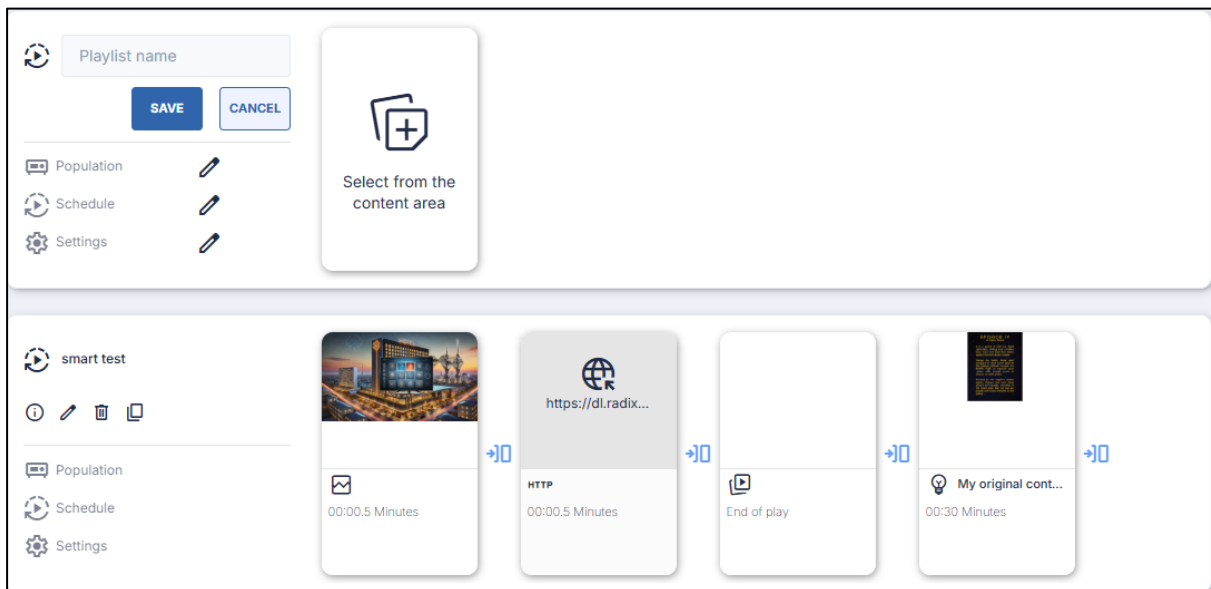
After we have created a repository of content items, we are now ready to arrange them in a Stream.

To create a new stream:

1. Click on **Add Stream** in the main screen.



A new playlist row opens.



2. Supply a name to the playlist in the playlist name textbox. We will give ours the name "New Playlist".



3. Select content from the **My contents** pane to add to your playlist. Click on the + icon on each content item that you want to add to the playlist.

Streams Console



You can mix several types of content to your playlist.

4. Upon adding an item to a Stream, you will see that you can also specify how long the item will be displayed. By default, a content item will be displayed for 30 seconds. But you can modify this to be anywhere from 1 second to 99 minutes and 59 seconds.

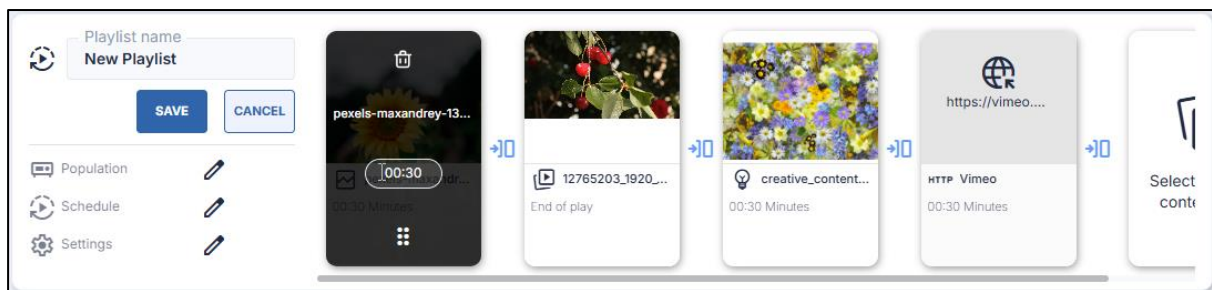


Figure 1-4: The content item will display for 30 seconds

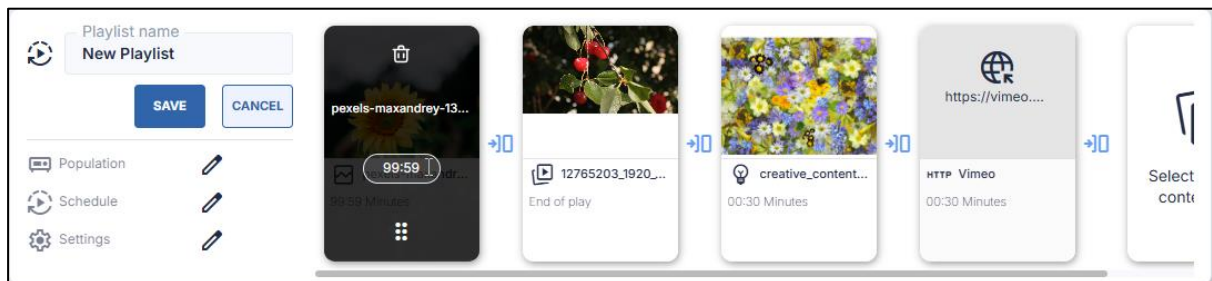
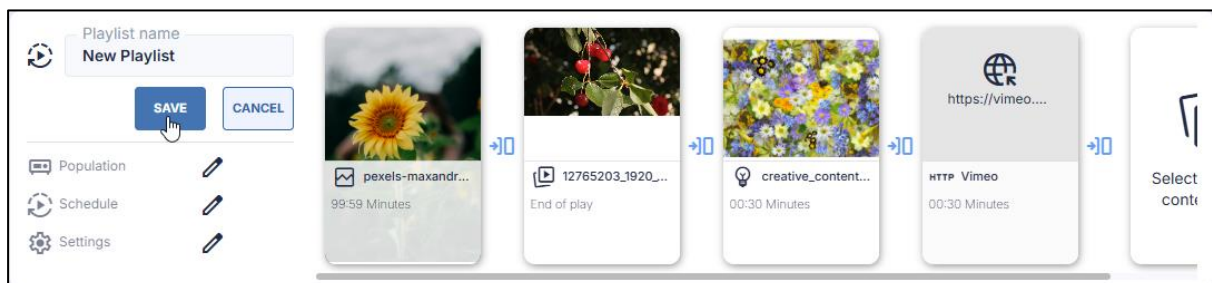


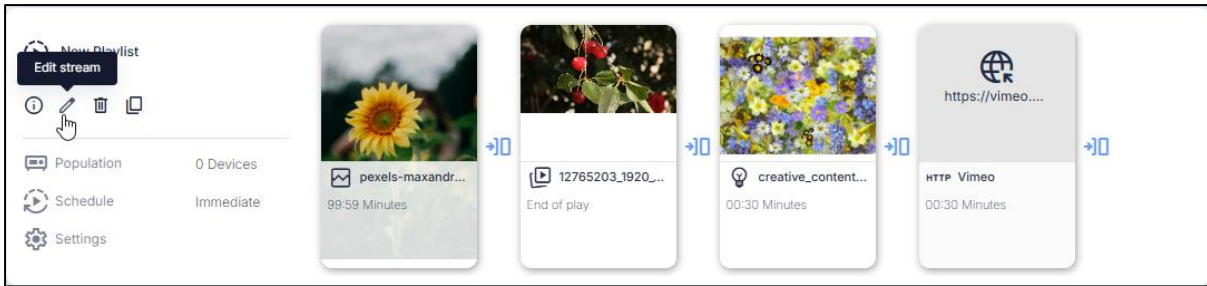
Figure 1-5: The content item will display for 99 minutes and 59 seconds

5. Click **Save** when you are finished.

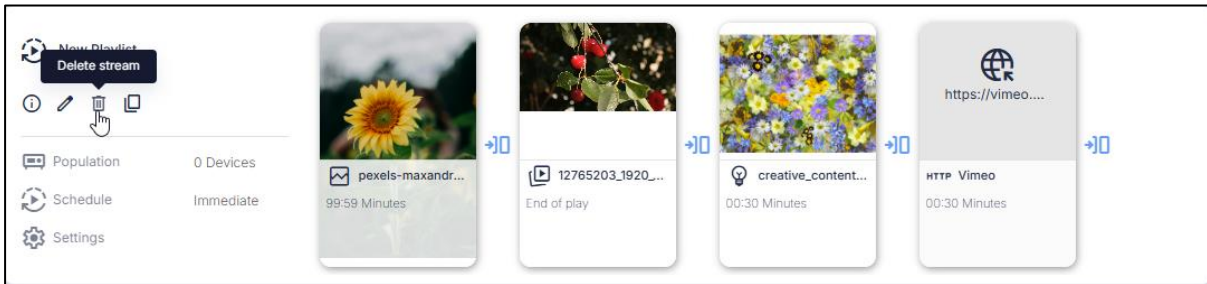


The playlist will now be closed to any editing.

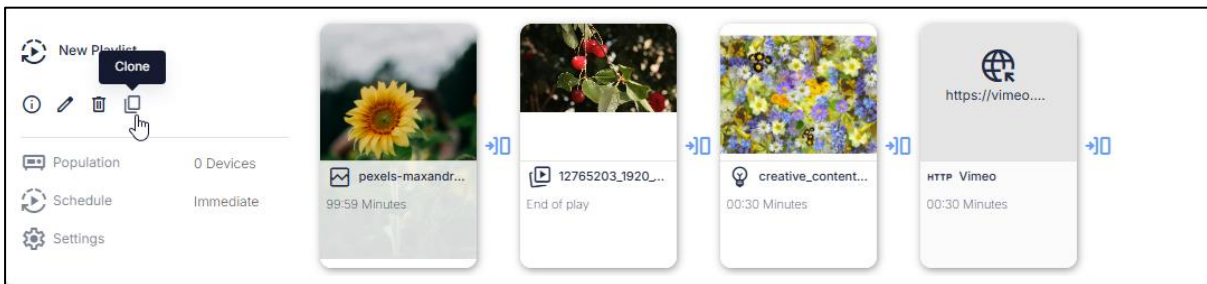
6. To edit a stream that you have created, click on the **Edit Stream** icon.



7. To delete a stream from the Streams Console, click on the **Delete Stream** icon.



8. You can also clone a stream by clicking on the **Clone** icon. This will allow you to create a new stream on the basis of an existing stream.



1.9 Populating the Stream

After you have arranged the slides of a Stream, you can now select a group of devices which will display the Stream. This is done using the Population icon.

Populating the stream consists of two parts:

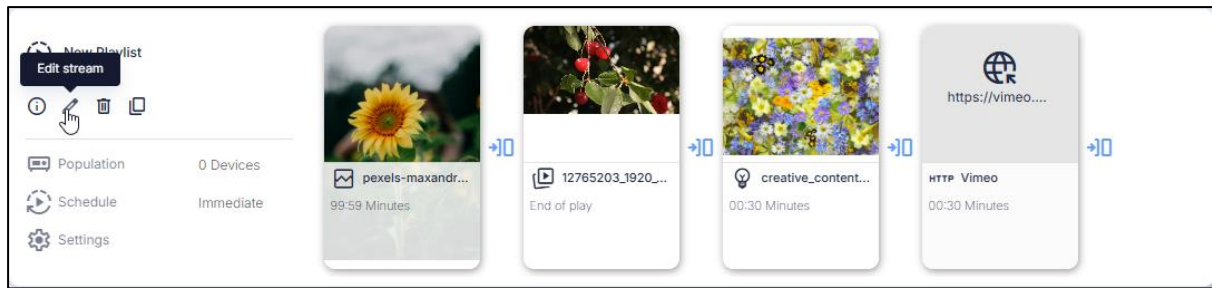
1. Associating a group with the Stream.
2. Applying an optional filter to the group, to display the Stream only on certain devices.

1.9.1 Associating a Group with the Stream

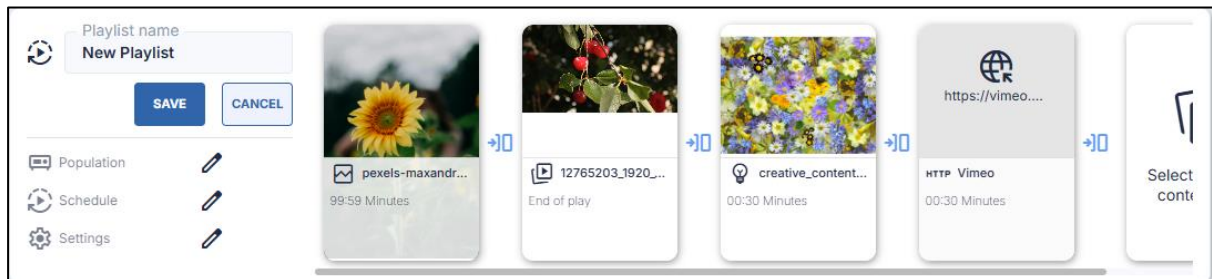
To associate a group with the Stream:

1. Click on the **Edit Stream** icon in the desired Stream.

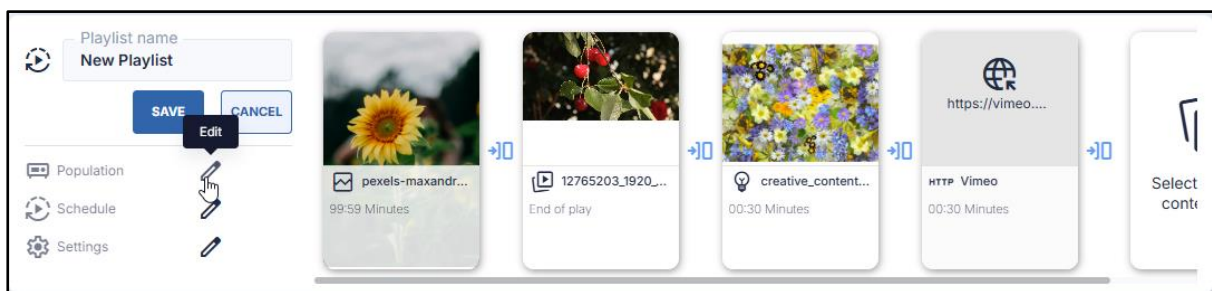
Streams Console



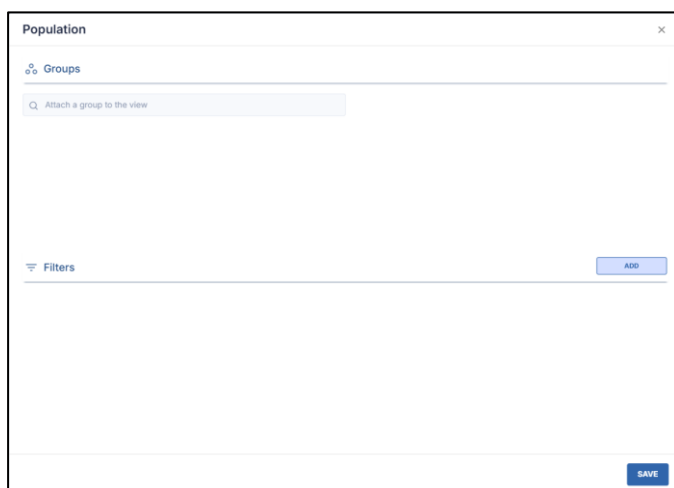
The Stream will enter into Edit mode.



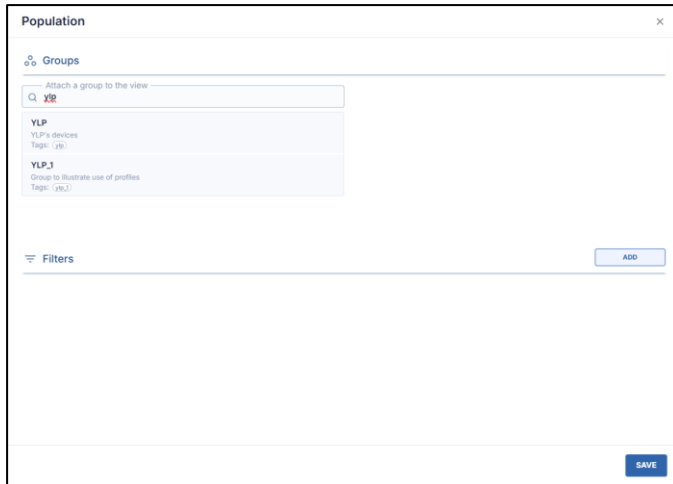
2. Click on the **Edit** icon next to Population.



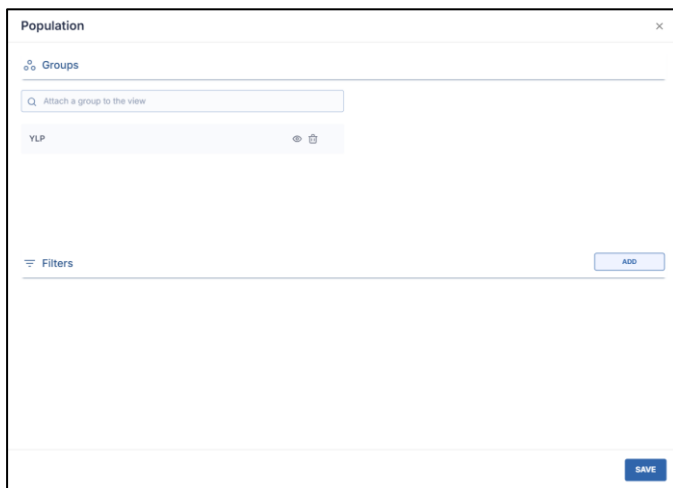
The Population window opens.



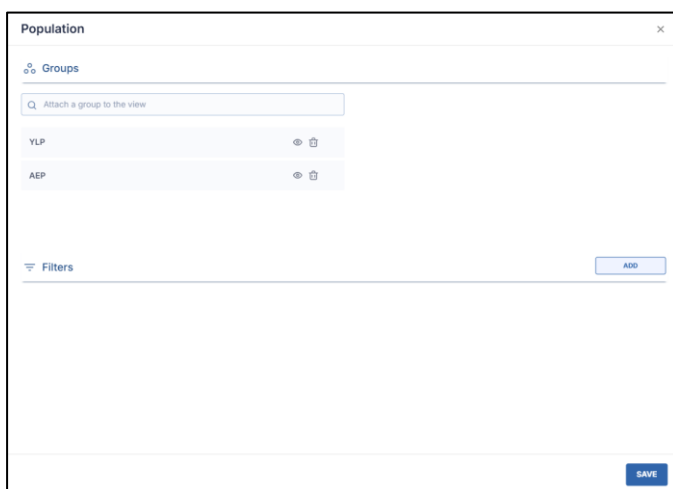
3. In the Groups pane, type in the name (or part of the name) of a device group. The groups containing that name will appear in a drop-down list.



4. Click on the group that you wish to associate with the Stream. It will be added to the Stream.



5. You can repeat the process and add several groups to a Stream. In the example below, the devices in groups YLP and AEP are now associated with the Stream.

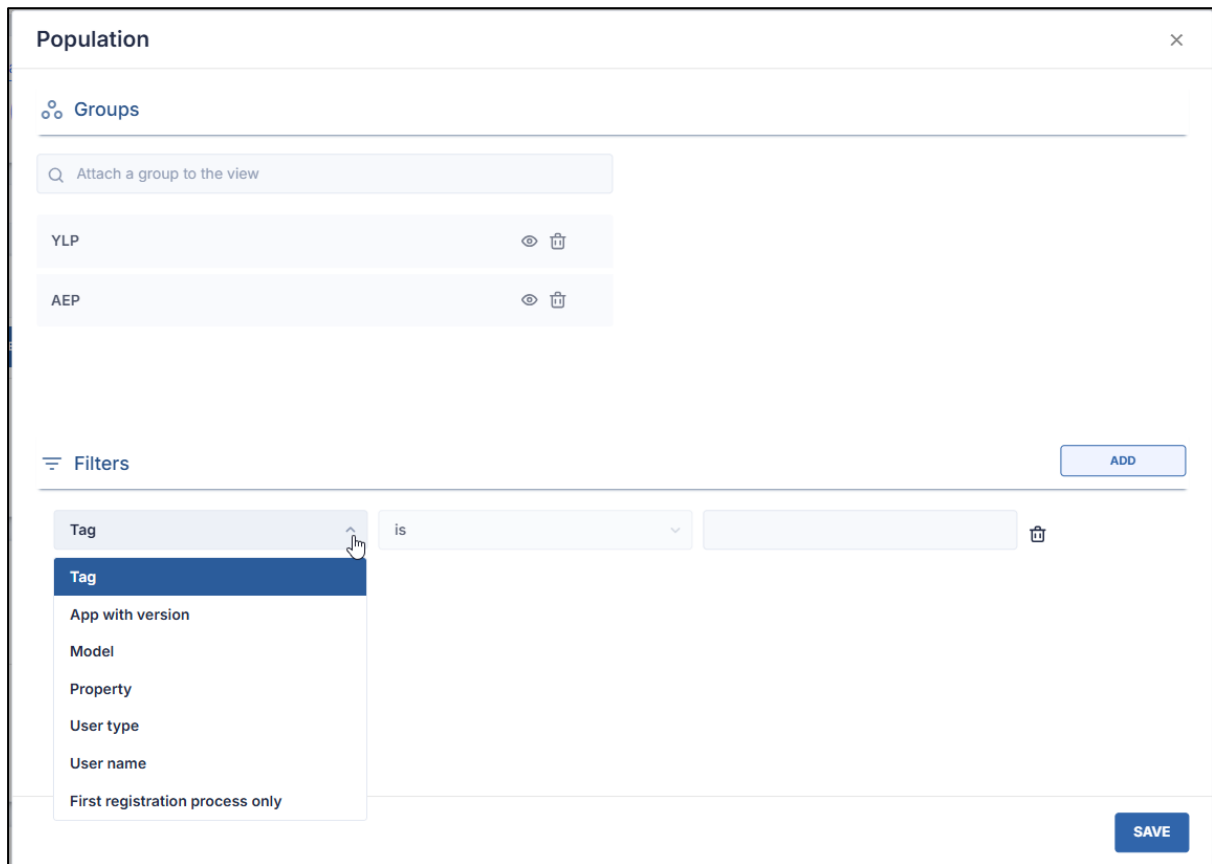


1.9.2 Applying a Filter

You can also add a filter, so that only specific devices in the groups will display the Stream.

To apply a filter:

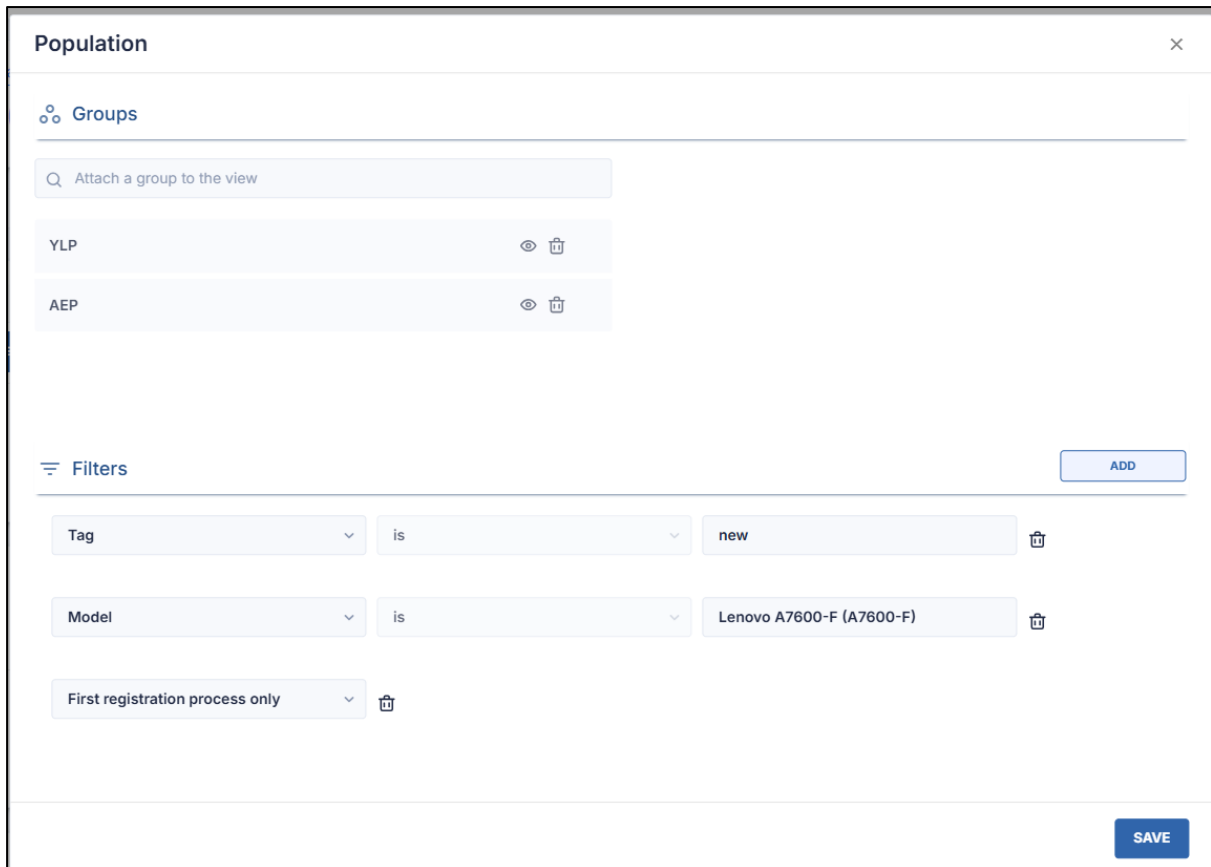
1. Click **Add** in the Filter pane. The Filter options appear.



The filter options include:

- **Tag:** To filter devices by the tags that they have been assigned.
- **App with version:** To filter devices by which version they have of a specific application. You then provide the name of the application and the version number.
- **Model:** This allows you to select a specific model of a device to apply the profile.
- **Property:** This allows you to apply a profile to devices with a specific property.
- **User type:** This allows you to filter out the devices by user type. The options include **owner**, **user**, or **guest**.
- **Username:** This allows you to filter out the devices in the group by username.
- **First registration process only:** This applies the profile to devices only at the time of their first registration in the Radix Device Manager.

You can combine and save several search conditions, to refine the selection of devices to display the Stream:



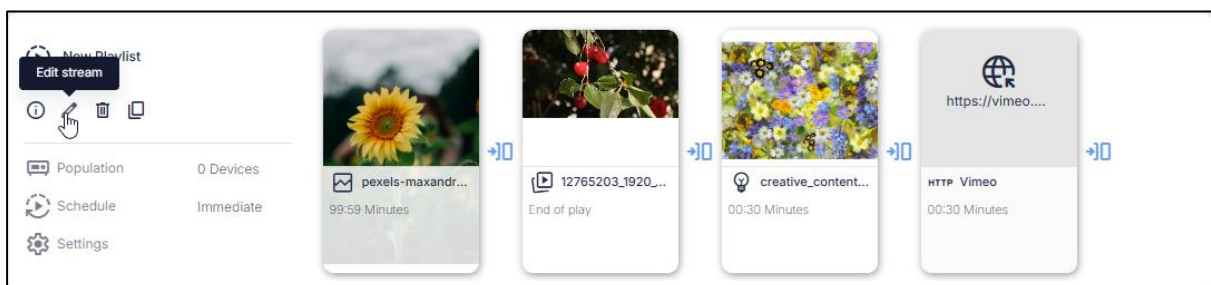
2. Click **Save** to save the population selection.

1.10 *Scheduling the Display of the Stream*

It is also possible to assign a schedule to the Stream. You can thus specify whether to display the Stream immediately upon giving the command, or only on certain days and times.

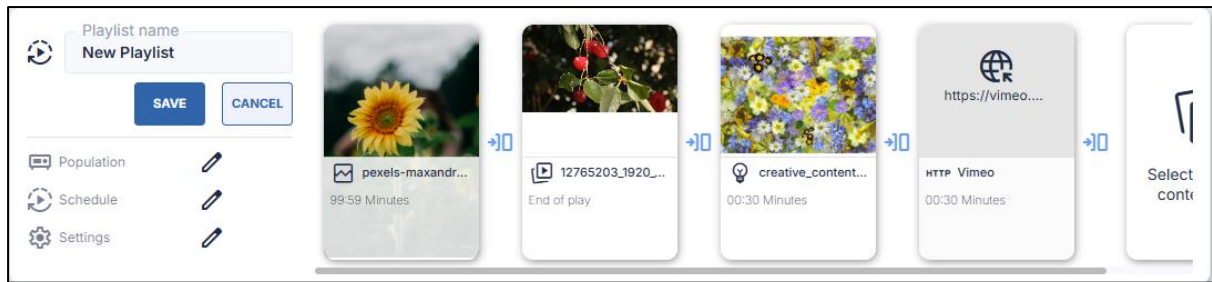
To schedule the stream:

1. Click on the **Edit Stream** icon in the desired Stream.

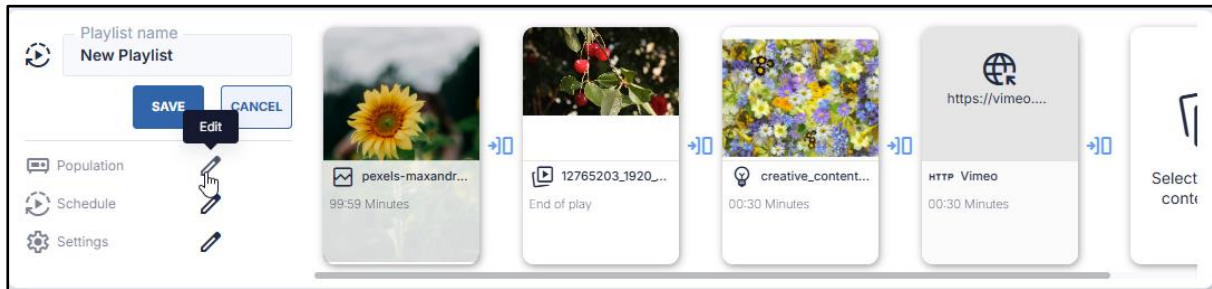


The Stream will enter into Edit mode.

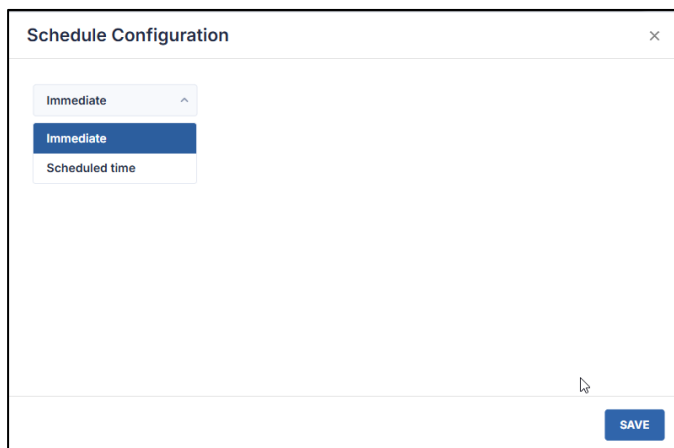
Streams Console



6. Click on the **Edit** icon next to Schedule.



The Schedule Configuration window opens.



The options are:

- **Immediate:** To execute the Stream as soon as the device gets the profile.
- **Scheduled time:** To execute the Stream over a time interval, where you assign a start time for the display of the Stream.

By checking the **Define end time** checkbox, you can also schedule an end date and time for when the display of the Stream should stop.

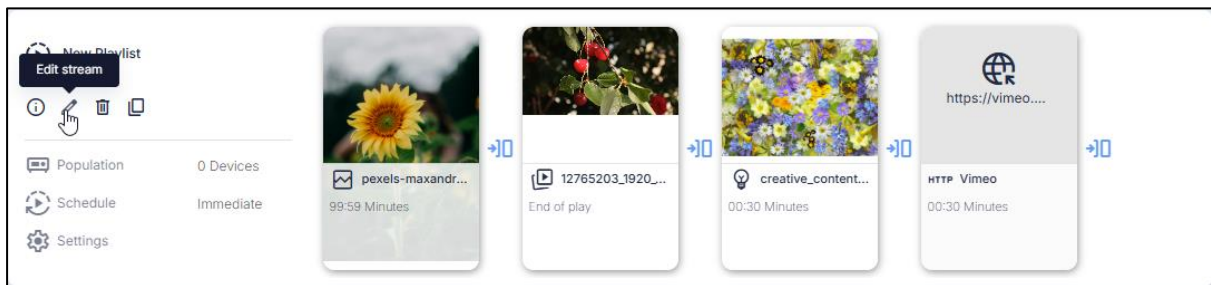
3. Click **Save** to save the schedule that you have assigned to the Stream.

1.11 Applying Settings to the Display of the Stream

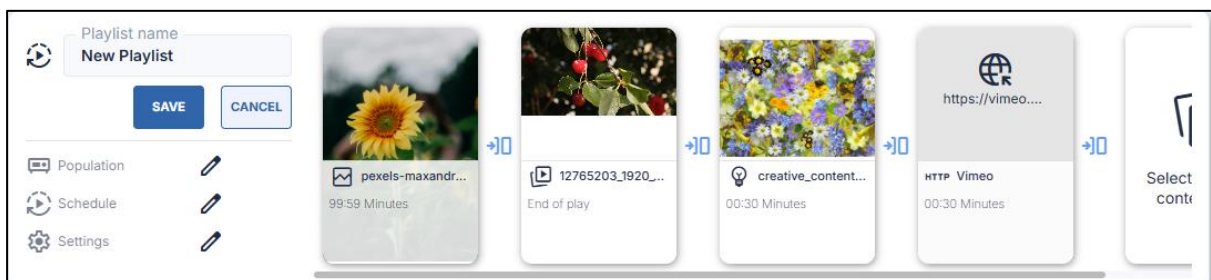
You can also adjust the Stream’s display settings.

To adjust the display settings:

1. Click on the **Edit Stream** icon in the desired Stream.

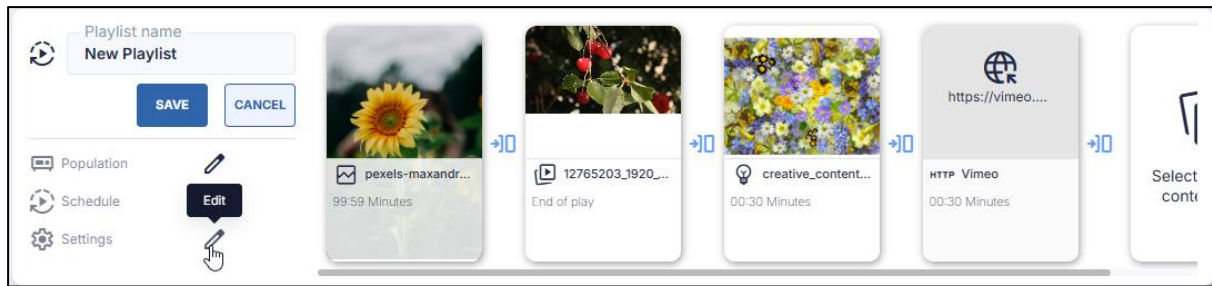


The Stream will enter into **Edit** mode.

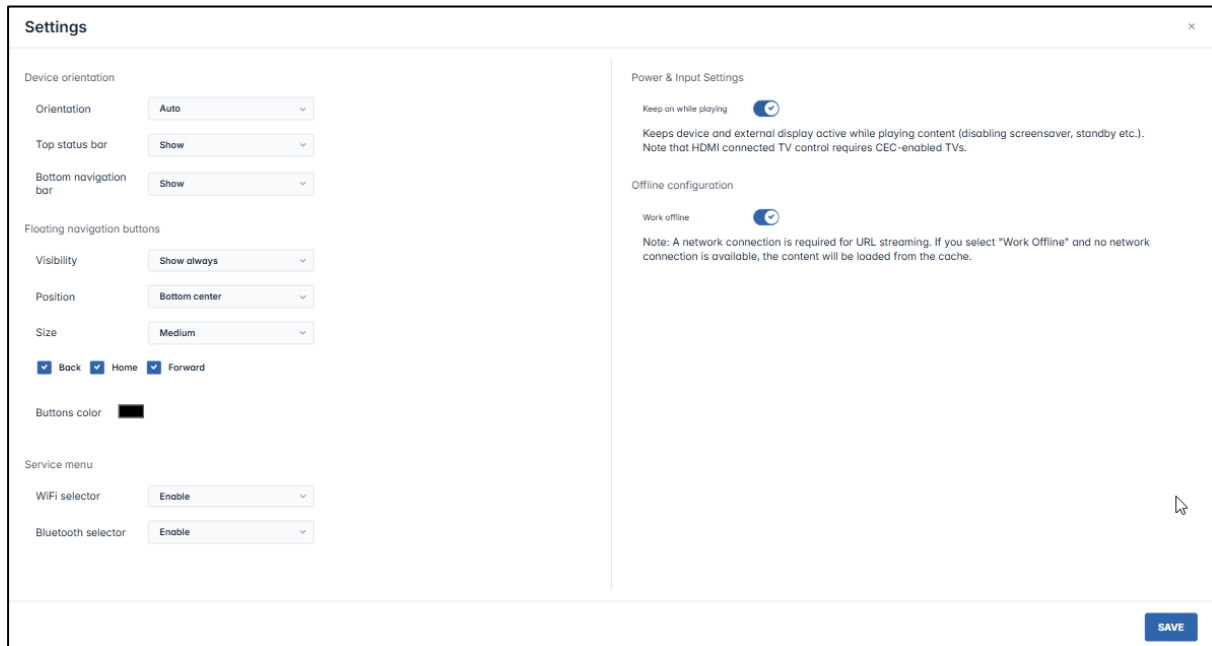


2. Click on the **Edit** icon next to Settings.

Streams Console



The Settings window opens.



Here is a brief explanation of the options in the Settings window:

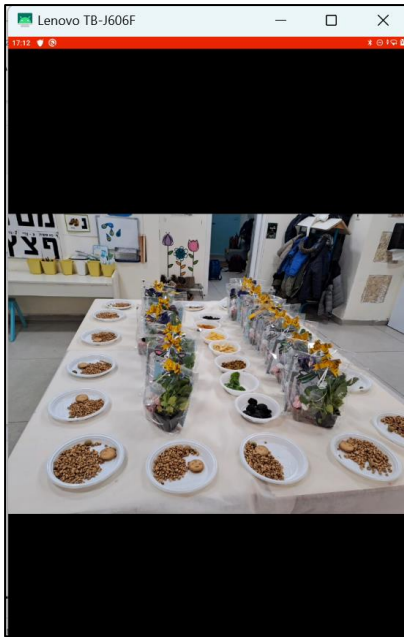
1.11.1 Device Orientation

This allows you to orient the display of the stream and show or hide the status and navigation bars.

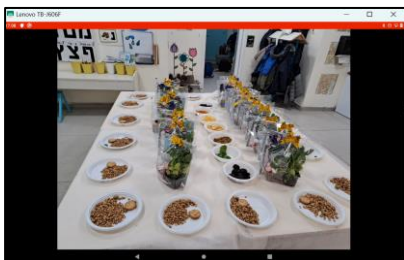
1.11.1.1 Orientation

This allows you to select the orientation of the remote device's display. The options are:

- **Auto:** This allows the orientation of the device's display of the Stream to adjust automatically, according to whether it is positioned in portrait or landscape mode.
- **Portrait:** This displays the Stream in portrait form.



- **Landscape:** This displays the Stream in landscape form.



1.11.1.2 Top status bar

The red status bar appears at the top of the Stream display. The options here are **Show/Hide**, to show the status bar at the top of the display, or to hide it.

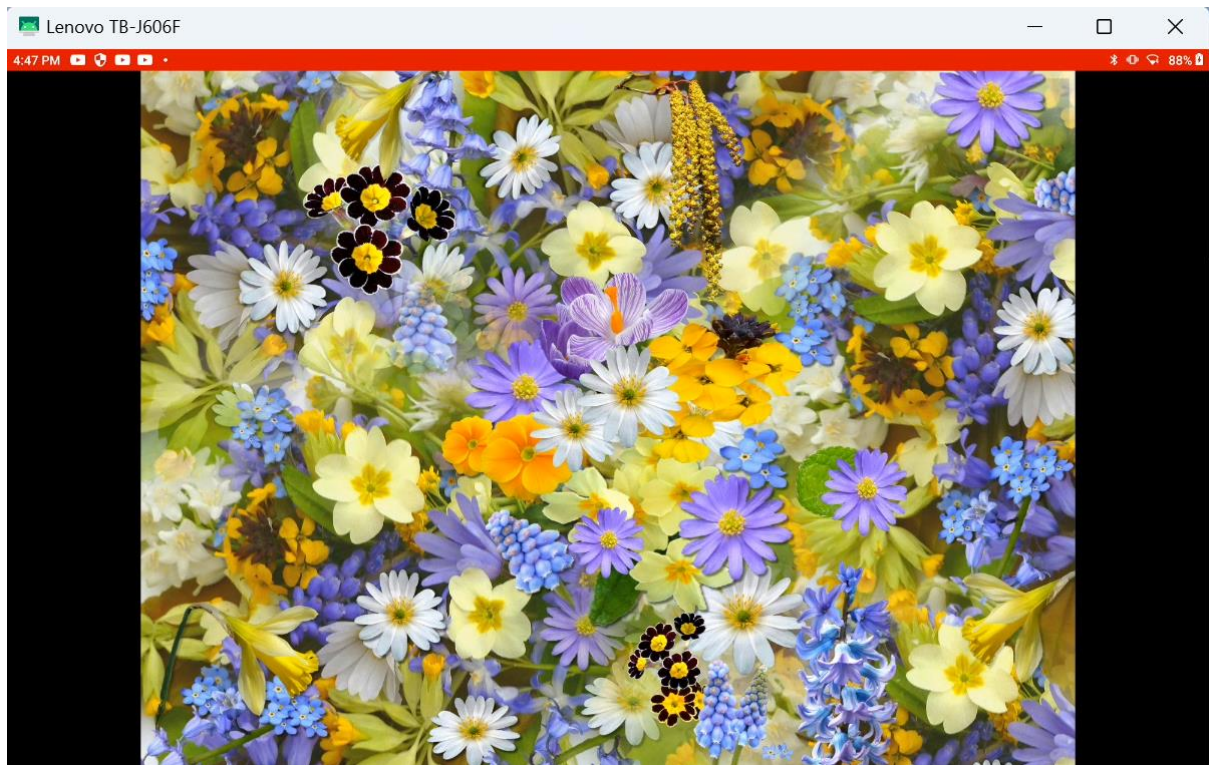


Figure 1-6: Tablet displaying the red status bar

1.11.1.3 Bottom navigation bar

The navigation bar appears at the bottom of the display, with Back, Home, and Stop buttons. Similarly, the options here are either **Show/Hide**.

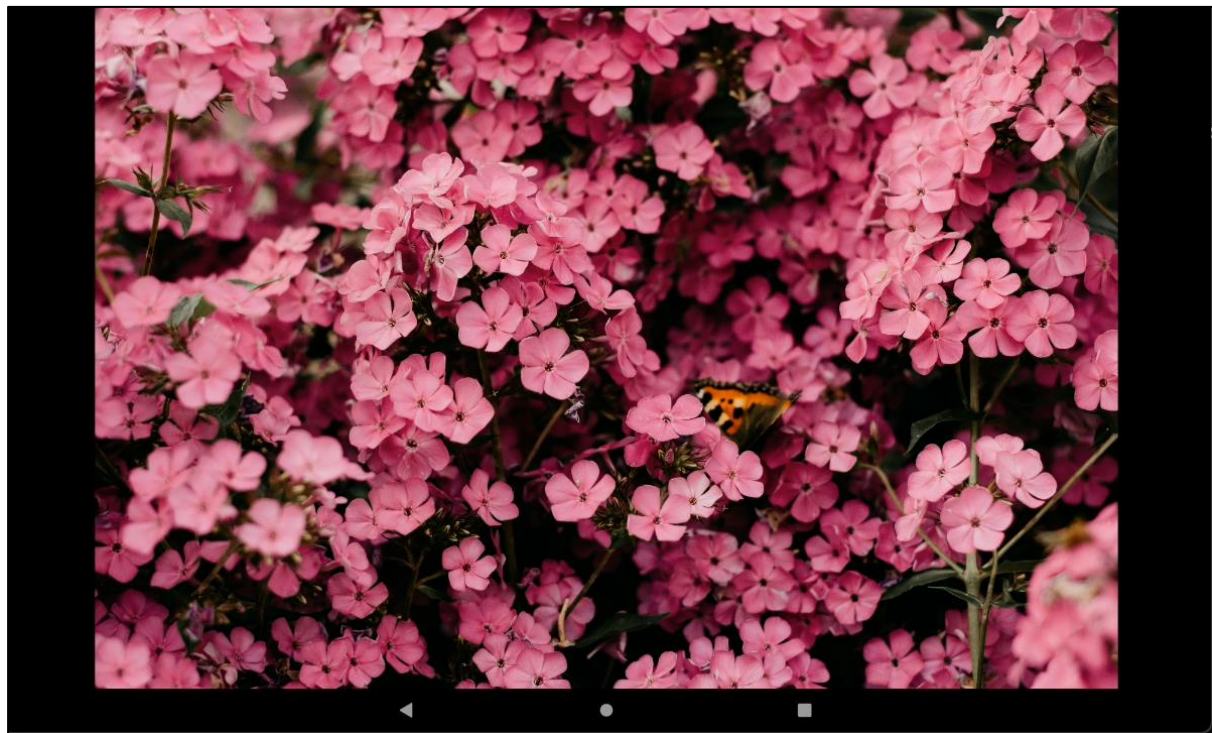


Figure 1-7: Tablet displaying the bottom navigation bar

1.11.2 Floating navigation buttons

This option will control the placement of additional navigation buttons that will be displayed on the Stream. This allows you to navigate through the URLs displayed on the remote device, even if you have disabled the navigation buttons that typically appear in an Android display.

In the example below, we specified that the floating navigation buttons be of medium size, and positioned in the upper left of the display:

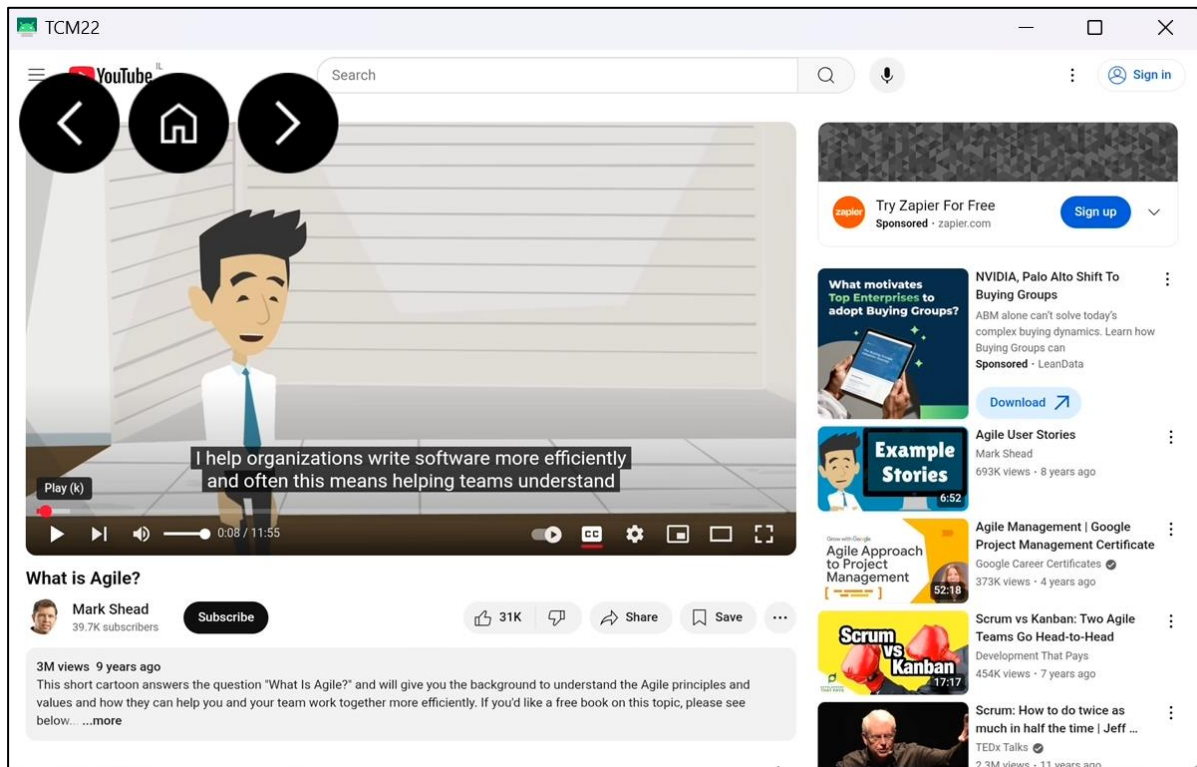


Figure 1-8: Floating navigation buttons in the upper left of the display

1.11.2.1 Visibility

The options include:

- **Hide**, to not display the navigation buttons at all,
- **Show always**, to display the navigation buttons at all times
- **Hide when inactive**, so that the navigation buttons appear when the user touches the display.

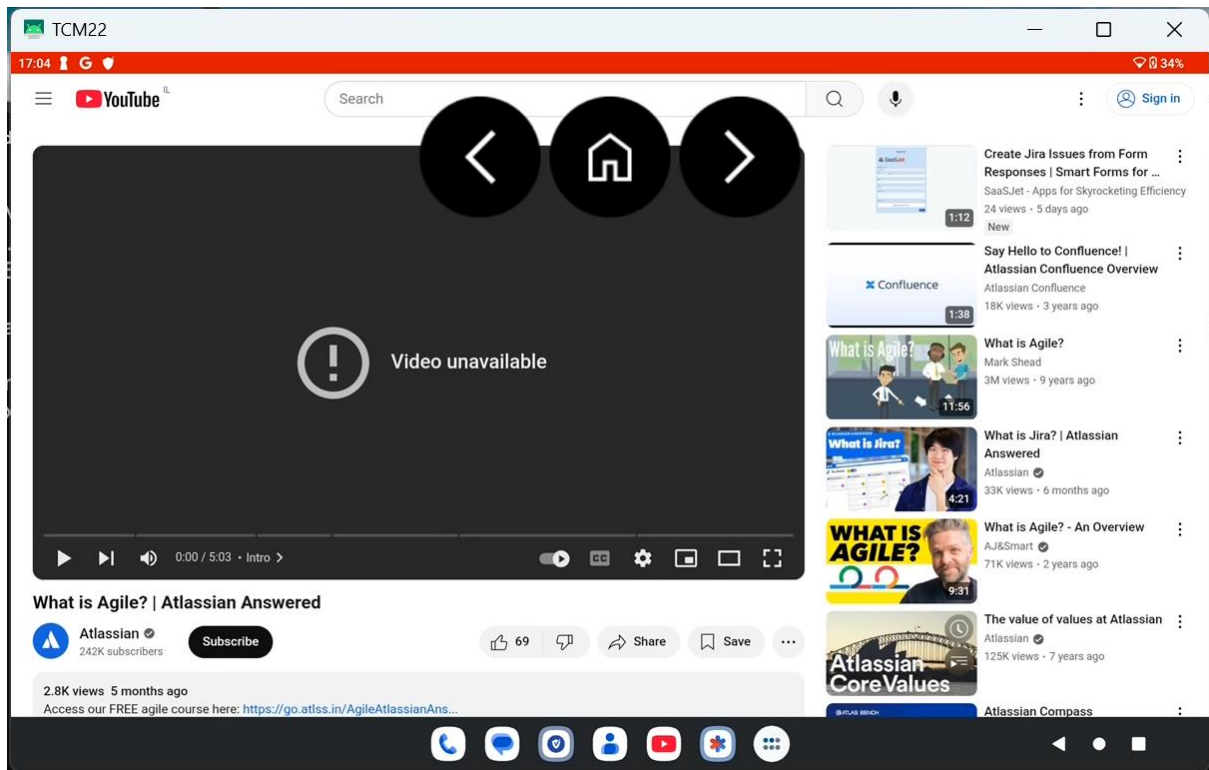


Figure 1-9: Large navigation buttons, positioned in the upper middle of the display

1.11.2.2 Position

This determines where the navigation buttons will be positioned. The options include:

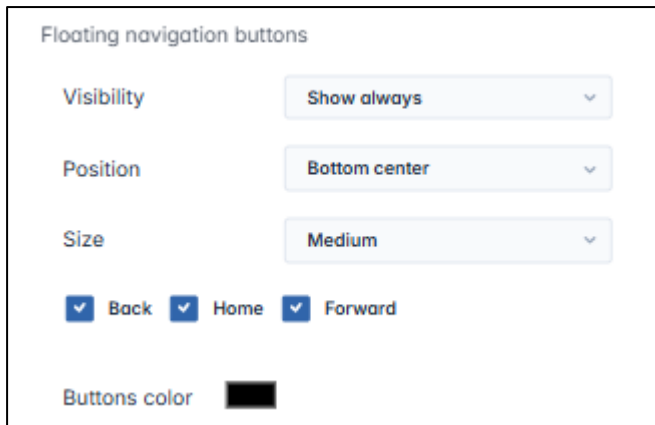
- Top left
- Top center
- Top right
- Bottom left
- Bottom center
- Bottom right

1.11.2.3 Size

The options for the size of the navigation buttons include **Small/Medium/Large**.

1.11.2.4 Selecting Buttons

There are a set of checkboxes that allow you to select which navigation buttons you want to display on remote devices. You can also select the color of the navigation buttons.



1.11.3 Accessing the Service menu

When a remote device is displaying a Stream, you typically won't be able to access the icons for the apps on the device. However, you can temporarily pause the display of the Stream by accessing the Service Menu.

You can access the Service menu in one of two ways:




1. By pressing on the device's Volume Up-Volume Down buttons repeatedly, or
2. By tapping on the display 5 times in quick succession.

The following menu appears:



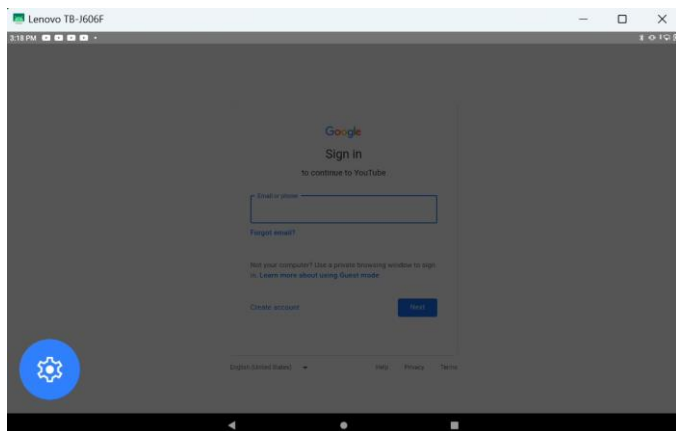
Figure 1-10: Settings icons while running a Stream

It displays three icons:

Icon	Description
	Select a Wi-Fi network
	Select a Bluetooth device
	Kiosk settings

Streams Console

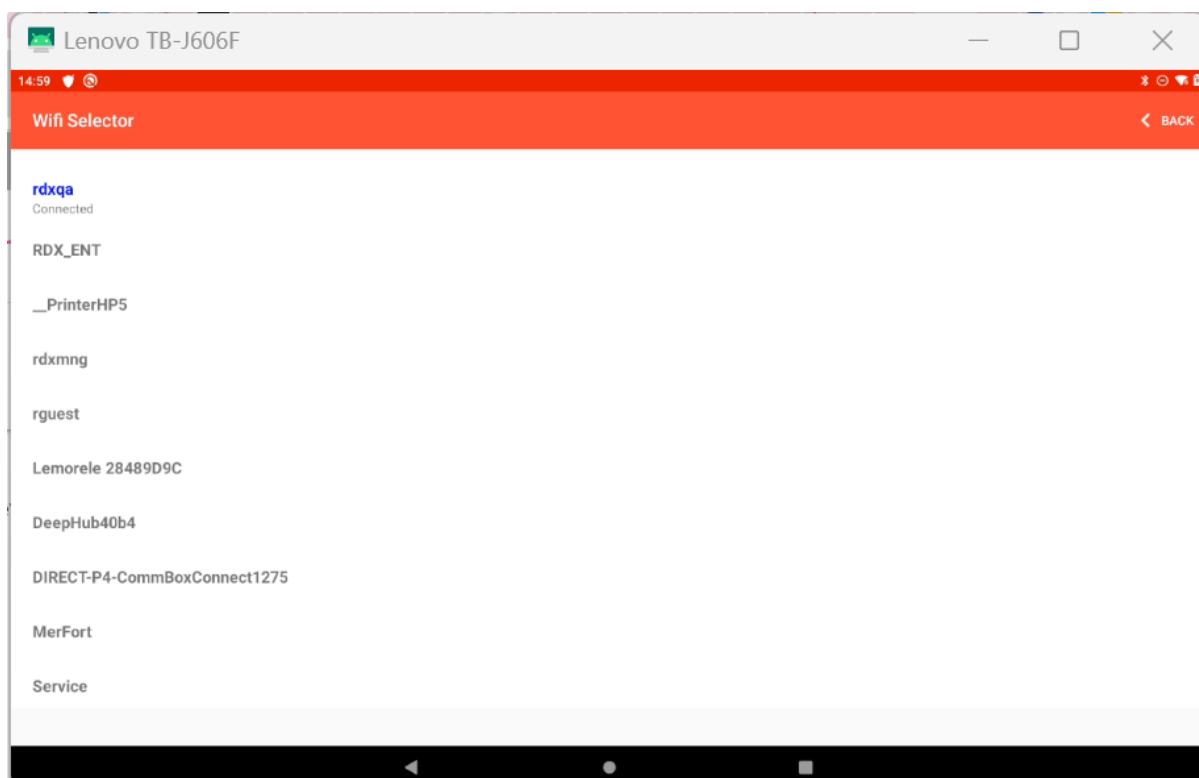
If you choose to disable the display of the Wi-Fi and Bluetooth buttons, then when you access the Service Menu (either by clicking on the Volume Up-Volume Down buttons or tapping the screen 5 times) will only display the Settings icon.



We will briefly describe the functionality of the buttons.

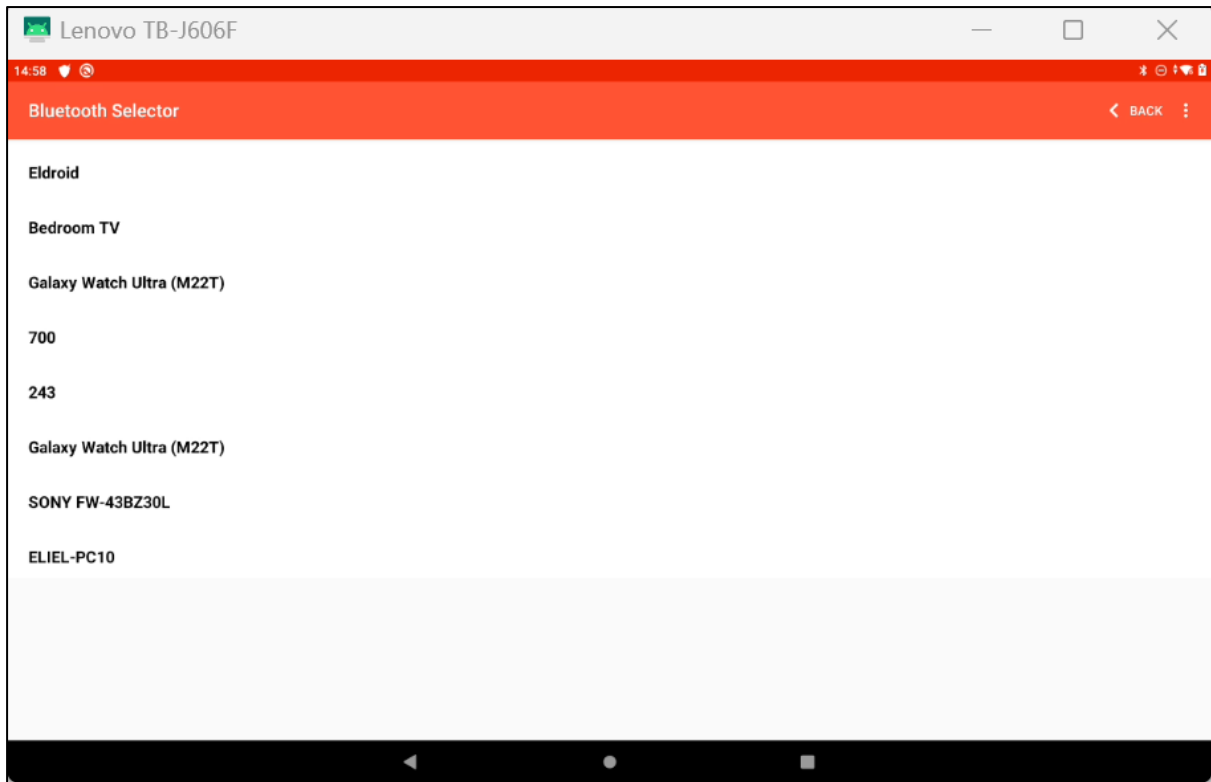
1.11.3.1 Wi-Fi Selector

The Wi-Fi selector display options in the Settings menu are **Enable/Disable**. This will display or hide the Wi-Fi selector icon. Clicking on the Wi-Fi selector displays the following screen, showing all of the available Wi-Fi networks in the area:

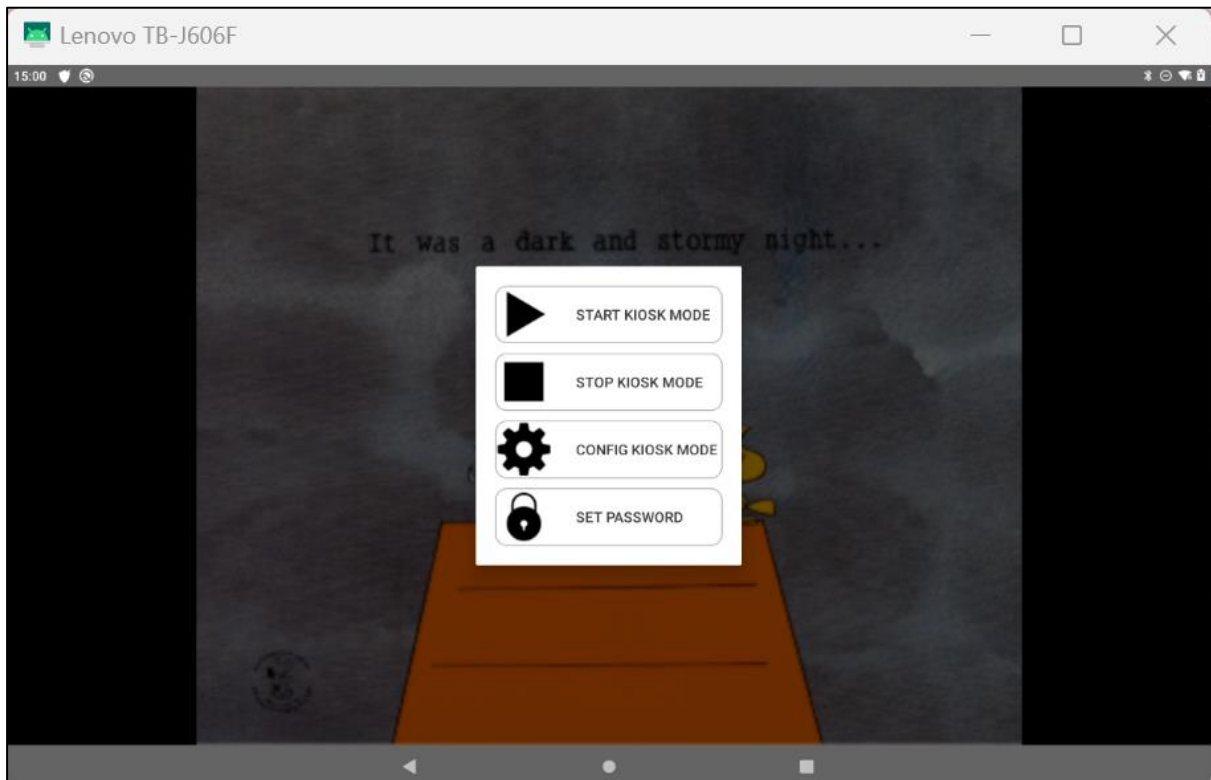


1.11.3.2 Bluetooth Selector

The options in the Settings window are **Enable/Disable**, to show or hide the Bluetooth selector icon. Tapping the Bluetooth Selector icon will open a list of Bluetooth devices in your area:



If you click on the Kiosk Settings icon, it opens the following menu:



- **Start Kiosk Mode** will resume the Stream.
- **Stop Kiosk Mode** will stop the Stream and allow the remote device to revert to normal functionality.

Note: This will only stop the Stream for a few minutes. It will be enough to allow you

to use the other apps on the remote device, until it goes back to displaying the Stream. If you wish to stop the Stream entirely, see **Section 1.13, Stopping a Stream.**)

- **Configure Kiosk Mode** will allow you to create a whitelist or blacklist of URLs and applications, and whether to allow installing apps on the remote device, and other device settings.

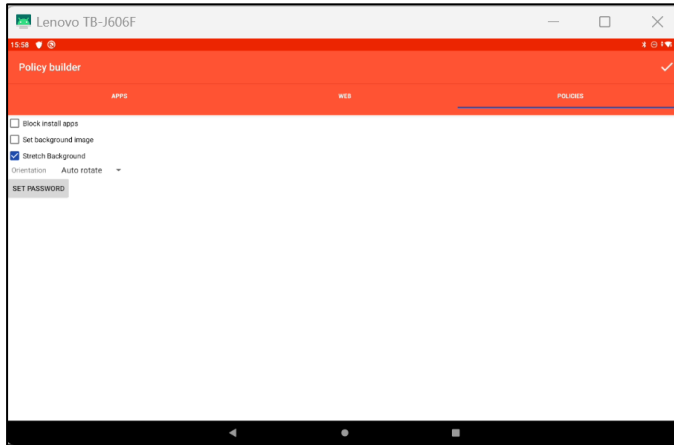
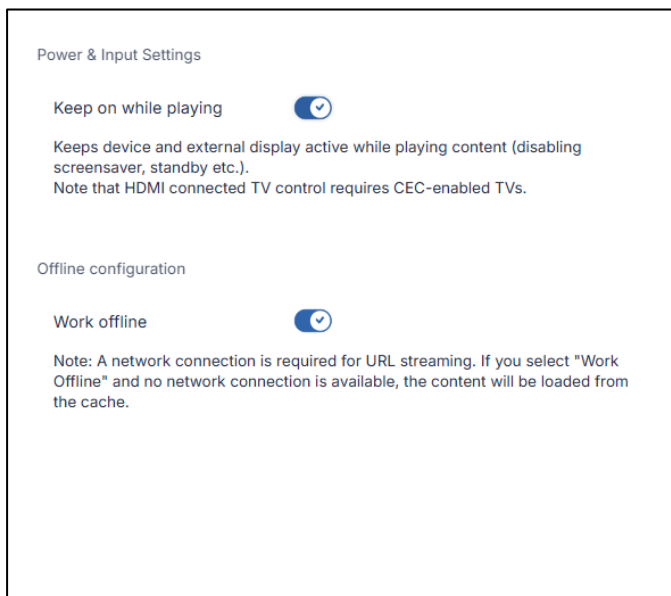


Figure 1-11: Policy builder tab

- **Set Password** allows you to set the password to access the device settings screen

On the right side of the Settings pane, you will see the following options:



We will briefly discuss the options.

1.11.4 Power & Input Settings

This has a **Keep on while playing** button. When selected, the player and device display remain powered on as long as the Stream is playing. If not selected, the remote device will go into screen saver mode at the time designated in the device's settings.

1.11.5 Offline configuration

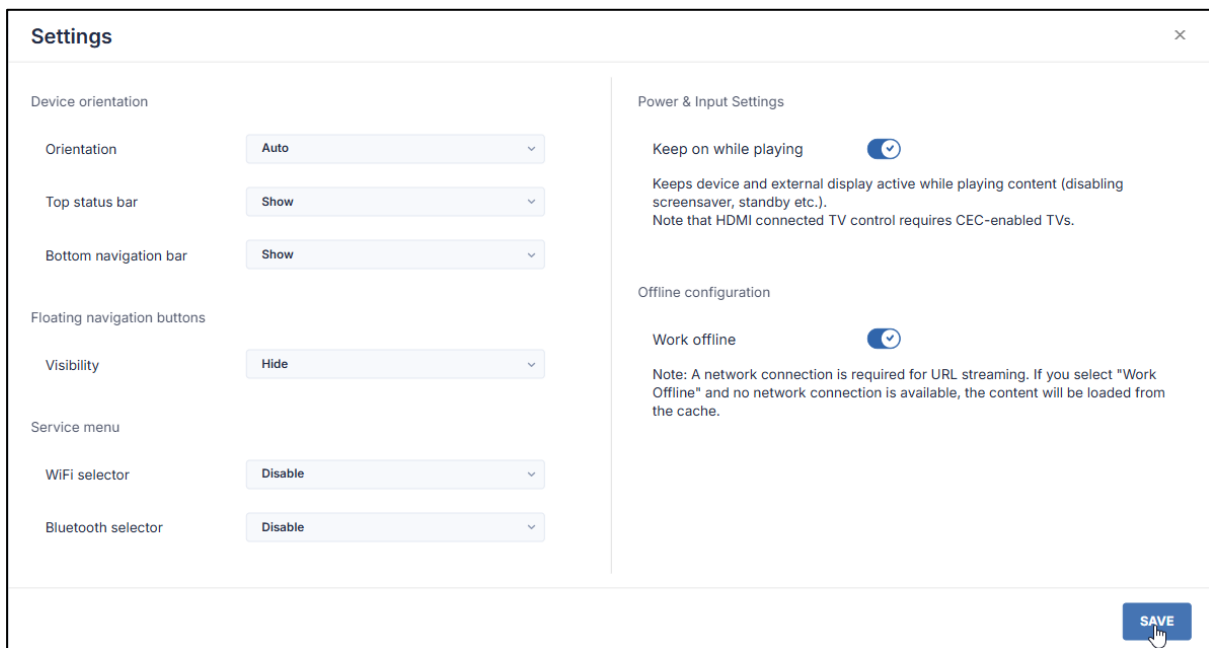
This has a **Work offline** option. When selected, this option will allow the device to continue to display the Stream even if the remote device is offline.

1.11.5.1 Work offline

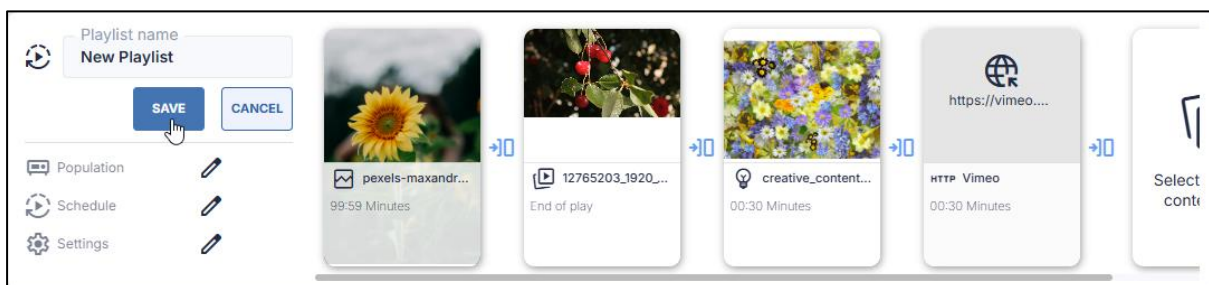
If you select to display a URL as your Stream, clicking this option will allow the device to continue to display the URL even if the remote device is offline.

1.12 Saving and Executing the Stream

1. Upon completing all of the **Population**, **Schedule**, and **Settings** options, click **Save** to save the settings.



2. Click **Save** in the selected Stream.



This will display the Stream on the selected devices, according to the schedule that you have specified.

1.13 Stopping a Stream

The devices will continue to display the Stream until you modify the Stream and disassociate the devices from that Stream.

Disassociating a device from a Stream can be done in one of two ways:

Streams Console

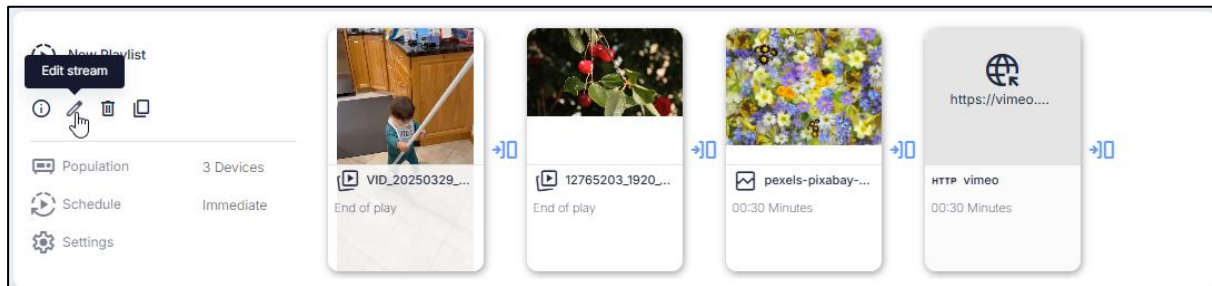
- Removing the Group from the Stream
- Removing the identifying tag from the device running the Stream

If you assign a group to two Streams at once, the devices in the group will start displaying the second Stream as soon as you disassociate the group from the first Stream.

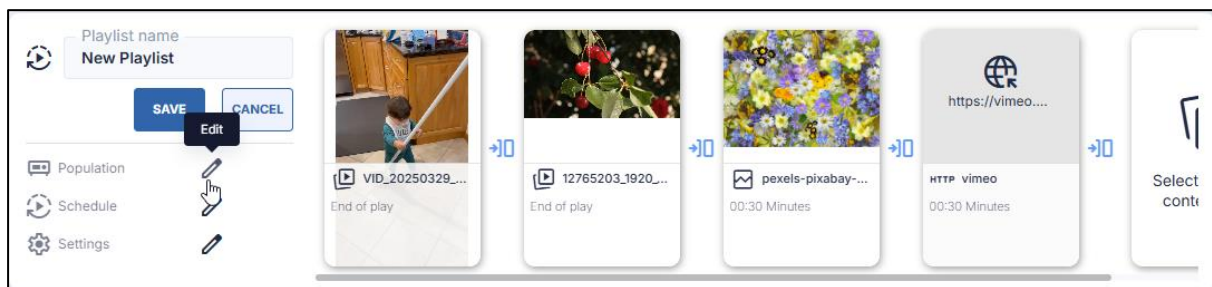
1.13.1 Method One: Removing the Group

To remove a group to which you have applied the Stream:

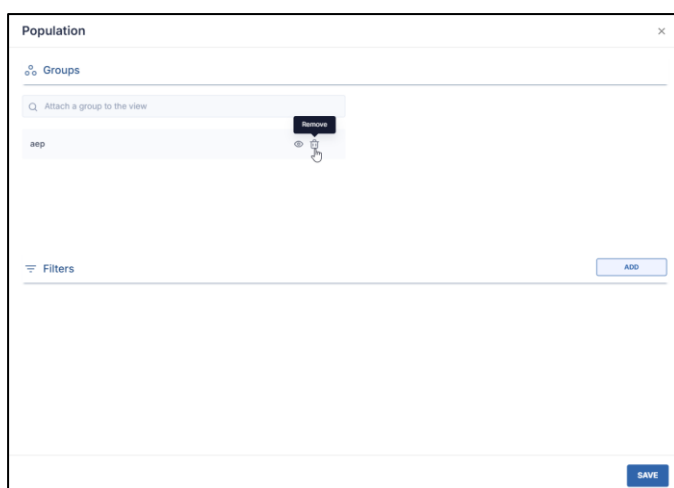
1. Click the **Edit Stream** icon on the Stream that is currently being executed.



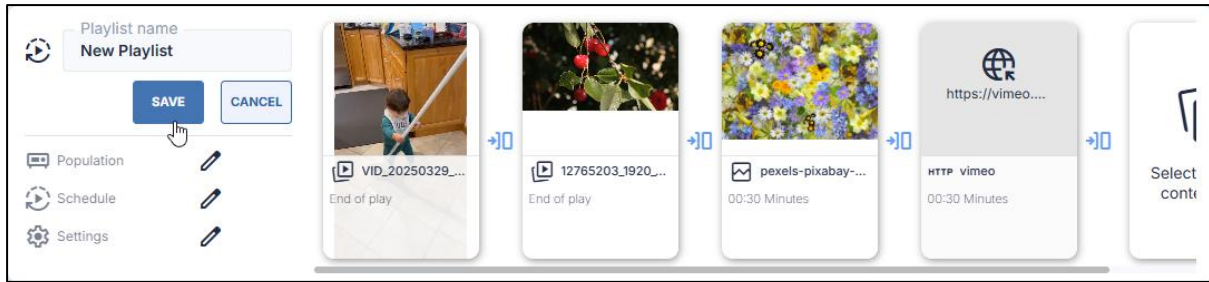
2. Click on the **Edit** icon near the Population option.



3. In the Population window, click on the **Remove** icon to disassociate the group from the Stream.
4. Click the **Save** button in the lower right corner.



5. Click on the **Save** button in the Stream display to save the new Stream configuration.



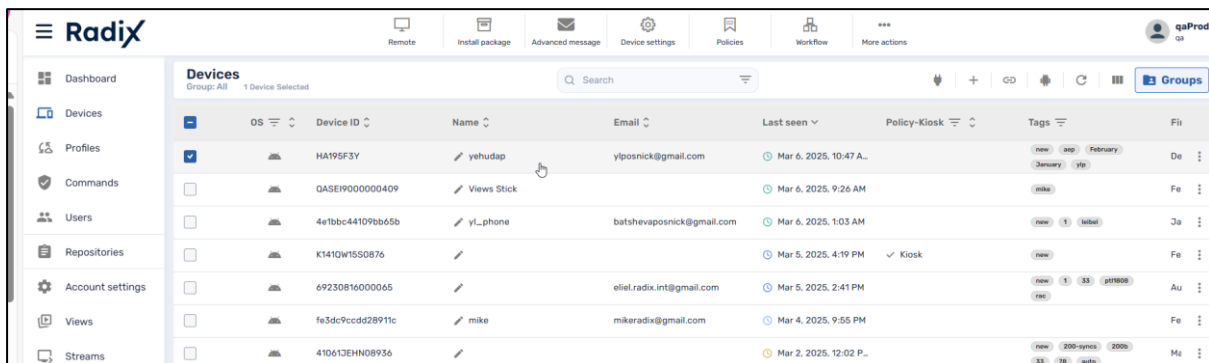
The Stream will stop being displayed on the devices in the group.

1.13.2 Method Two: Removing the Tag

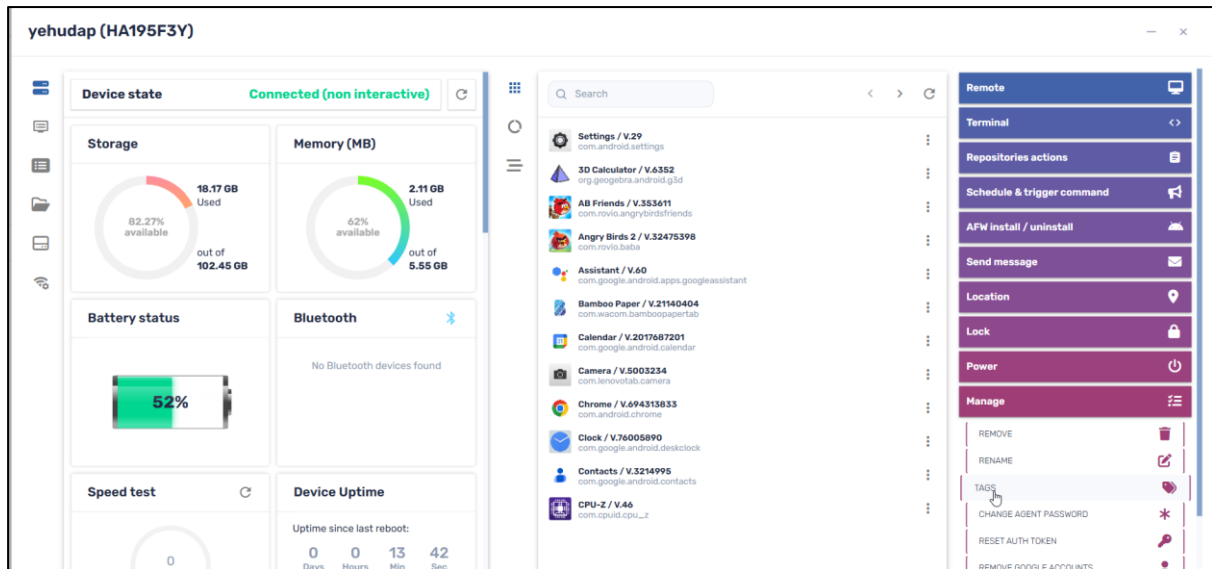
Another method of stopping a device from displaying the Stream is to remove the identifying tag from the individual device or group of devices. This will also disassociate that device from the Stream. (This option can only be applied to individual devices in a group. It cannot be executed on all of the devices in the group at once by a single command.)

To remove the tag from an individual device:

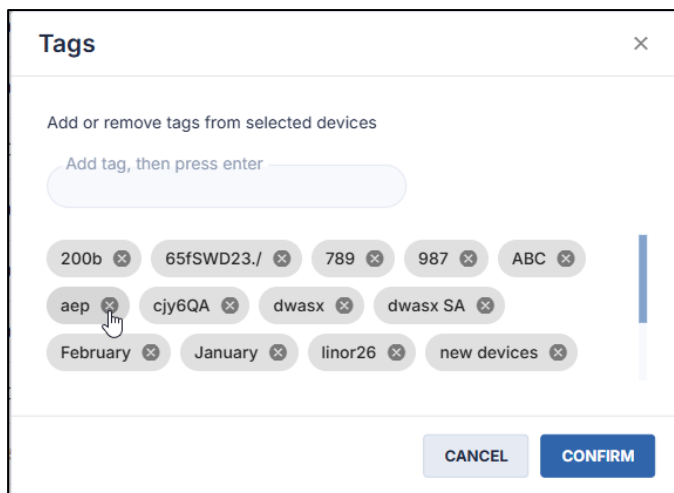
1. Click on the **Devices** icon in the sidebar menu of the Radix Device Management platform, to open the Devices Console.
2. In the Devices Console, find the device from which you wish to delete the tag that associates the device with the Stream. In our example, we want to remove the tag from the device “HA195F3Y”.



3. Click on the row of that device to open its Device Dashboard.
4. In the Device Dashboard, go to **Manage>Tags**.



5. In the Tags window, delete the tag that associates the device with this group. In our case, we will delete the tag “aep”. Click on the x icon to delete that tag.
6. Click **Confirm** to finalize the changes to the device.



The selected device will stop displaying the Stream.

1.13.3 Restoring a Tag to Resume Playing a Stream

To have the device resume displaying the Stream:

1. As before, click on the **Devices** icon to go to the Devices Console.
2. Find the device in the list and click on its row to open its Device Dashboard.
3. In the Device Dashboard, go to **Manage>Tags**.
4. In the Tags window, add the tag and press Enter. In our example, we will reassign the tag “aep”.

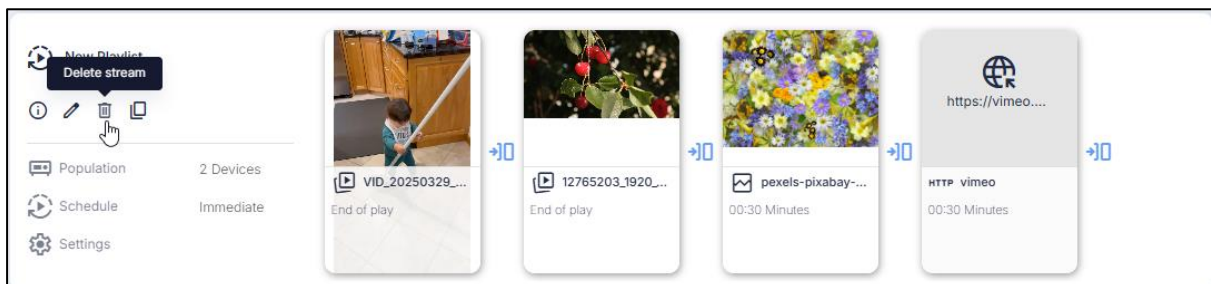


5. Click **Confirm** to finalize restoring the tag to the device. The device will resume displaying the Stream once again.

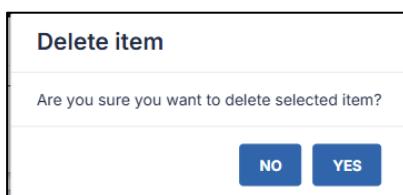
1.14 Deleting a Stream

To delete a Stream from the Streams console:

1. On the row of the Stream, click on the **Delete Stream** icon.



You will be prompted if you are sure that you want to delete the selected stream:



2. Click **Yes** to delete the Stream.